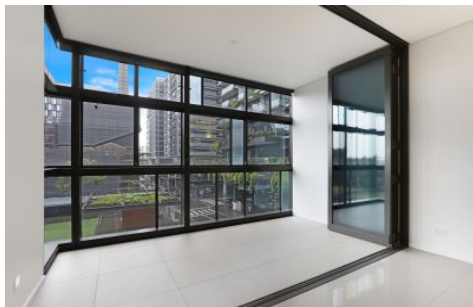


VILLAGE PROPERTY



304/1 Park Lane Chippendale NSW

2 2 1

BY PRIVATE APPOINTMENT ONLY

Enjoy inner-city living at its best with vibrant surrounds, leafy outlooks and impressive space in this unique two-bedroom apartment. Set within the Central Park development's acclaimed Park Lane building, this stylish abode features crisp interiors, smart modern finishes and permanent park views over the Central Park green. It's also well-positioned for a truly effervescent lifestyle in a premium location with diverse leisure, pleasure and dining out experiences just footsteps from the door.

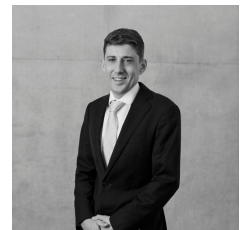
- Generous open living area with easy to maintain tiled flooring
- A wintergarden featuring large floor-to-ceiling walls of glass
- Contemporary galley kitchen and stylish modern gas

Price : \$1,280,000 - \$1,320,000

View : <https://www.villageproperty.com.au/sale/nsw/sydney-city/chippendale/residential/apartment/7713198>

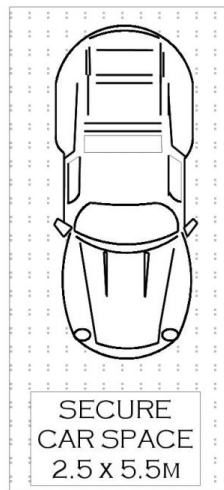
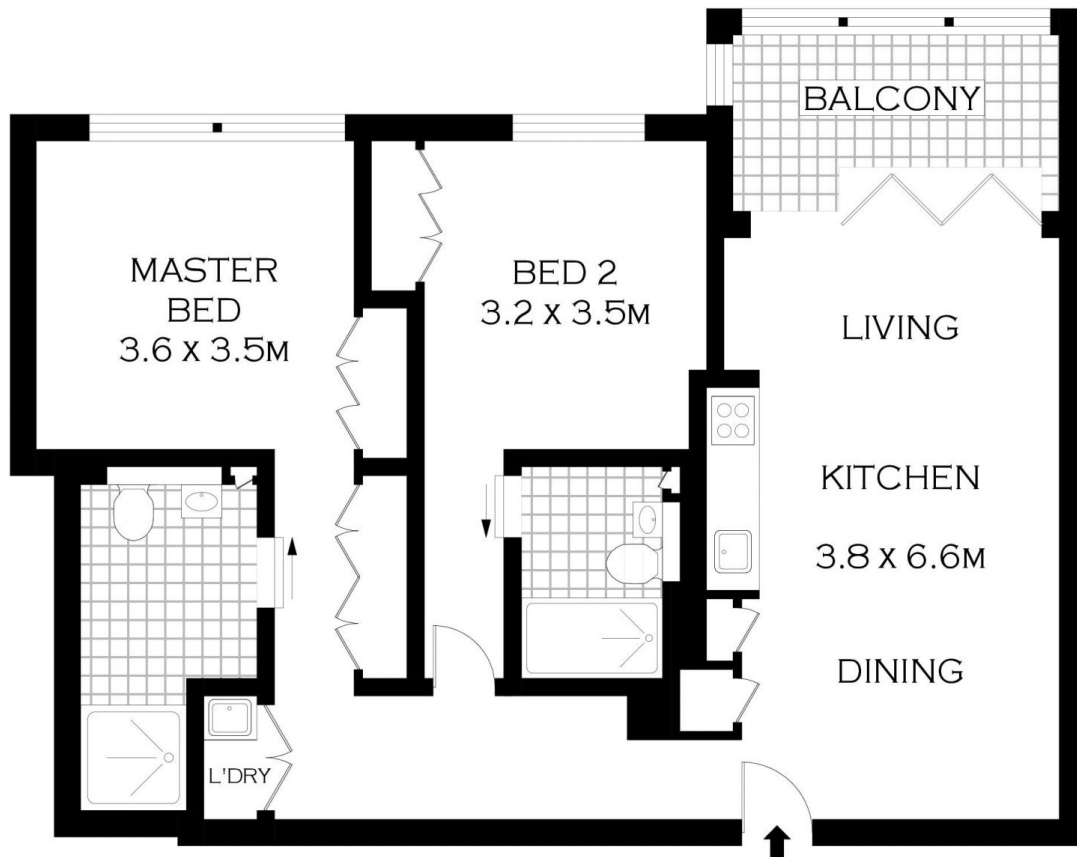


Zhuoqun (Kate) Zhang
1300 62 44 00



Jack Williams
1300 62 44 00

<https://www.villageproperty.com.au>



PLANS SHOWN ONLY INDICATIVE OF LAYOUT. DIMENSIONS ARE APPROXIMATE.
Floor plans by www.remaustralia.com
Ref. No: 15012



304/1 PARK LANE

CHIPPENDALE