

# VILLAGE PROPERTY



**314/20 Nancarrow Avenue Meadowbank NSW**

2 2 1

Available 21st September

"Kingston Quarter" Shepherds Bay is the area's newest development offering a waterfront position, luxurious designer finishes and the most convenient access to Meadowbank's surrounds. Facilities include a stunning swimming pool and spa.

Features Include:

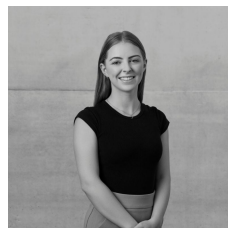
- Water views
- Generous bedrooms with built-ins
- Separate study area
- Balcony ideal for entertaining
- Great open plan layout
- Kitchen with island bench

[For full version visit the website](https://www.villageproperty.com.au)

**Type** : Apartment

**Price** : \$750 Per Week

**View** : <https://www.villageproperty.com.au/lease/nsw/northern-suburbs/meadowbank/residential/apartment/7714039>



**Jessica Deagan**  
1300 20 55 69

<https://www.villageproperty.com.au>