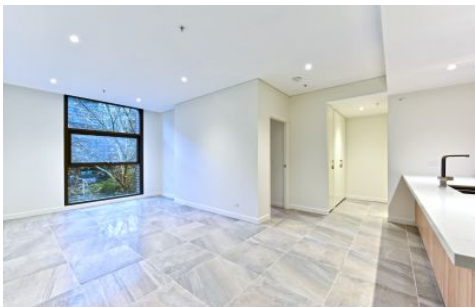


# VILLAGE PROPERTY



**509/188 Day Street Sydney NSW**

1  1 

Available from 18th September -

Proudly set high above the eastern edge of the revitalised Darling Harbour lifestyle precinct, 'Radiance' is a landmark of contemporary inner city living. This stunning residence will be the epitome of effortless low maintenance quality and timeless sophistication.

- Well configured with invitingly spacious modern interiors
- Generous open plan entertaining areas
- Double bedrooms with built in robes
- Designer kitchen has gas appliances and stone bench tops
- Study alcove, security intercom and a European laundry
- Simply a stroll to Haymarket culture, transport and cafes

**Type** : Apartment

**Price** : \$800 Per Week

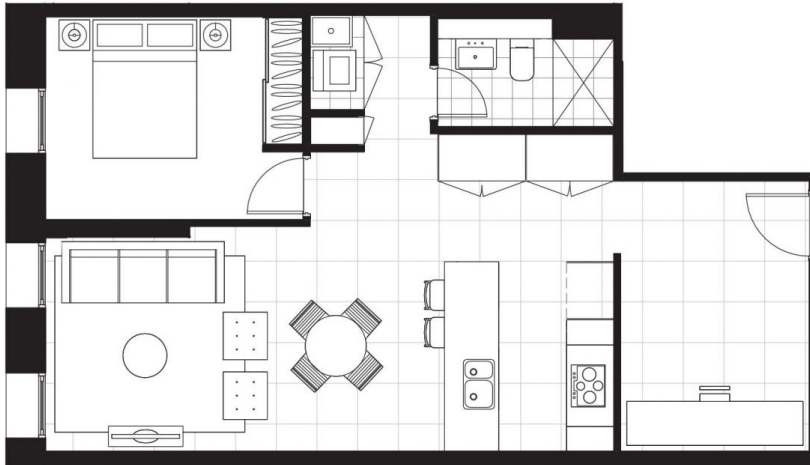
**View** : <https://www.villageproperty.com.au/lease/nsw/sydney-city/sydney/residential/apartment/7714607>



**Kate Zhang**  
1300 62 44 00

[For full version visit the website](https://www.villageproperty.com.au)

<https://www.villageproperty.com.au>



Disclaimer: Please note that the layout plan was produced prior to construction. The information is believed to be correct but is not guaranteed. Changes may be made during construction and dimensions, areas, fittings, finishes and specification are subject to change without notice in accordance with the provisions of the contract for sale. The furniture and furnishings depicted are not included with any sale and purchasers must refer to their contract for sale for the list of inclusions. The position of the furniture and furnishings should not be taken to be indicative of final positions of power points, tv connection points and the like. Prospective purchasers must rely on their own enquiries. All graphics including the layout and balustrades and the like are indicative only. Balustrades for services are not depicted. The layout plan is at an unspecified scale for 0.



**RADIANCE**  
DARLING HARBOUR

**1  
BEDROOM  
+ STUDY**

**LEVEL 5**

**APARTMENT  
509**

**INTERNAL  
65 m<sup>2</sup>**

**TOTAL  
65 m<sup>2</sup>**

**1800 776 105**  
radianceapartments.com.au

**LOFTEX CBRE**