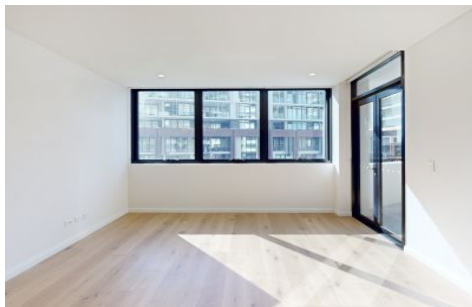


VILLAGE PROPERTY



110/32 Civic Way Rouse Hill NSW

2 2 1

Available 4th September

Positioned just moments from the Rouse Hill Town Centre precinct, Proximity provides you with the perfect location for the ultimate combination of accessibility and lifestyle.

You'll love having beautiful parks and open space right on your doorstep, while being moments from a life of convenience. Set in a highly desirable location with beautiful established trees, serene park-like surrounds and neighbouring heritage buildings. Nature strips connect directly from site to the nearby riding and walking trails, reserves and parks.

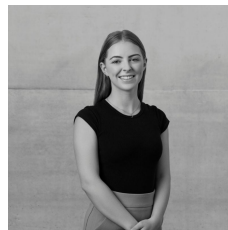
Features Include:

[For full version visit the website](https://www.villageproperty.com.au)

Type : Apartment

Price : \$650 Per Week

View : <https://www.villageproperty.com.au/lease/nsw/hills/rouse-hill/residential/apartment/7715444>



Jessica Deagan
1300 20 55 69

<https://www.villageproperty.com.au>

Unit 110, 32 Civic Way, Rouse Hill

2 Bed 2 Bath 1 Car



FLOOR PLAN



(Not In Position)

CAR SPACE

Internal : 79m²
External : 13m²



VILLAGE PROPERTY

All information contained herein is gathered by Little Hinges.
Whilst the scanning technology is highly reliable,
we cannot guarantee its accuracy and interested parties
should rely on their own enquiries.