

VILLAGE PROPERTY



903/2A Elsie Street Burwood NSW

1 1 1

Available from 20th September -

Designed by famous architects Turner, have created an alluring modern landmark right in the beating heart of Burwood, on the doorstep of Burwood Park. Capturing glorious predominantly northerly views, this slender, elegant building is a spectacle of glass and light. Encompassing a maximum just five residences per floor, it has a boutique feel. Westfield shopping and Burwood Train Station just footsteps away for your convenience. Cafes and restaurants all within walking distance.

Features Include:

- Furnished
- Spacious bedroom with built in wardrobe, queen sized bed and bedside tables

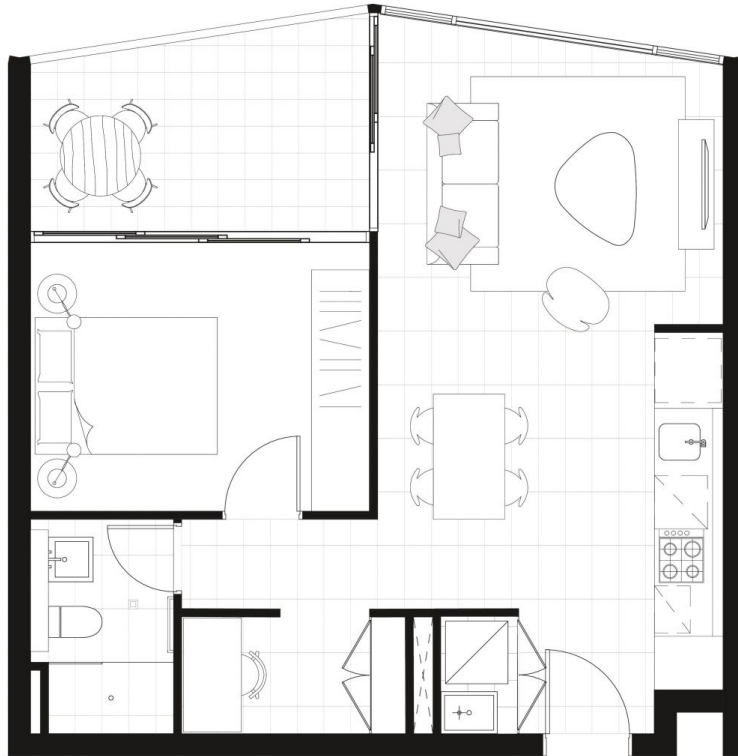
Price : \$750 Per Week

View : <https://www.villageproperty.com.au/lease/nsw/inner-west/burwood/residential/apartment/7715718>



Kate Zhang
1300 62 44 00

<https://www.villageproperty.com.au>



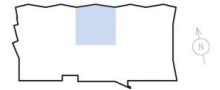
lighthouse
BURWOOD

LEVEL 3, 5, 7, 9, 11, 13

303, 503, 703, 903,
113, 133

1 Bedroom

Internal area (sqm):	51
Balcony area (sqm):	8
Total (sqm):	59



lighthouseburwood.com.au | 1800 137 889

ATLAS
PROPERTY HOLDINGS PTY LTD

CBRE

Disclaimer: 1. Please note, this layout plan was produced prior to construction. 2. This information is believed to be correct, but is not guaranteed. 3. Changes may be made during construction and dimensions, areas, fittings, fixtures and specifications are subject to change without notice in accordance with the provisions of the contract for sale. 4. The furniture and fittings depicted are not included with the sale and purchasers must refer to their contract for sale for the full particulars. 5. The position of the furniture and fittings should not be taken to be indicative of their position of access points, to common areas and the site. 6. Perspective drawings must not be used for comparison. 7. All graphics including this layout and illustrations and the like are illustrative only. 8. Measurements for accuracy are not depicted. 9. The floor plan is at an unperfected scale.