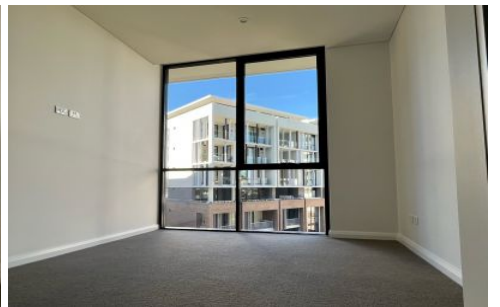
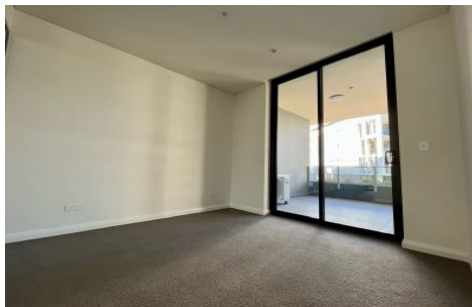


VILLAGE PROPERTY



315/32 Civic Way Rouse Hill NSW

2  2  1 

Available NOW

Positioned just moments from the Rouse Hill Town Centre precinct, Proximity provides you with the perfect location for the ultimate combination of accessibility and lifestyle.

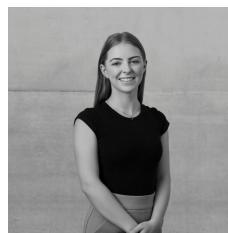
You'll love having beautiful parks and open space right on your doorstep, while being moments from a life of convenience. Set in a highly desirable location with beautiful established trees, serene park-like surrounds and neighbouring heritage buildings. Nature strips connect directly from site to the nearby riding and walking trails, reserves and parks.

Features Include:

- Two spacious bedrooms with built in robes
- Ensuite to main bedroom

Price : \$660 Per Week

View : <https://www.villageproperty.com.au/lease/nsw/hills/rouse-hill/residential/apartment/7717810>



Jessica Deagan
1300 20 55 69

<https://www.villageproperty.com.au>

 2
 2

TOTAL: 85 sqm

INTERNAL 75 sqm
EXTERNAL 10 sqm

