

# VILLAGE PROPERTY



1406/36 Oxford Street Epping NSW

2 2 1

Ultra-Modern and Abundant with Natural Light This contemporary two-bedroom apartment provides a low-care designer lifestyle complemented by a premium location in the epicenter of Epping. Nestled within the architectural Vista tower of the prestigious Oxford Central development, it boasts a sleek, modern design and panoramic city skyline & Sydney Harbour Bridge view.

- Floor to ceiling windows, abundance of natural light and a well-thought-out open design
- Elevated position, providing sweeping views
- Ducted air-conditioning, sizable entertainer's balcony
- Kitchen boasts quality finishes, including stone benches, island benchtop and sleek Miele appliances
- Both bedrooms feature built-in wardrobes and direct

[For full version visit the website](https://www.villageproperty.com.au)

**Type** : Apartment  
**Price** : \$1,037,000  
**View** : <https://www.villageproperty.com.au/sale/nsw/northern-suburbs/epping/residential/apartment/7750759>

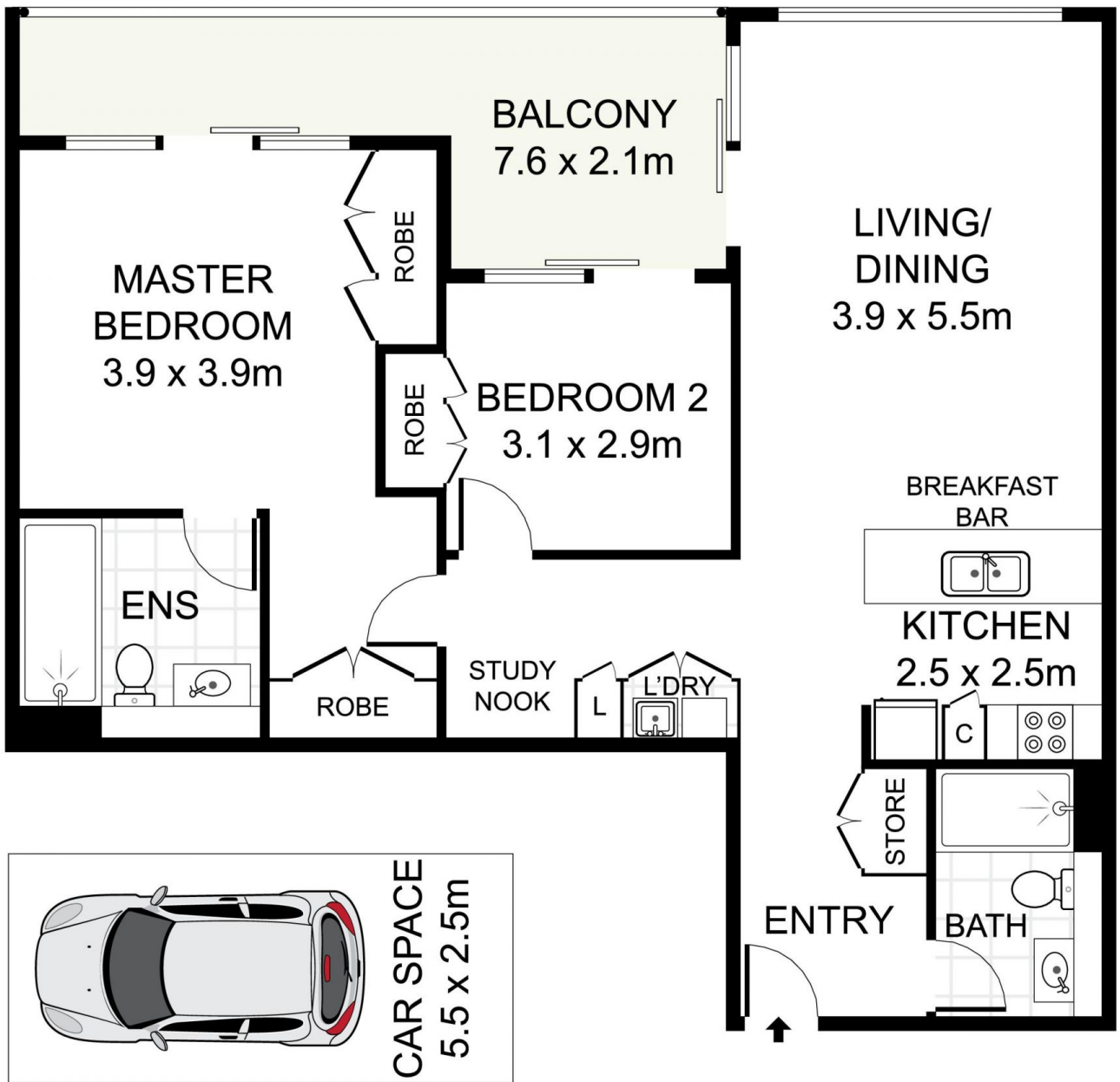


**Gene Kingston**  
1300 62 44 00



**Thomas (tom) Jones**  
1300 62 44 00

<https://www.villageproperty.com.au>



**STORE CAGE**  
2.5 x 1.0m

LEVEL FOURTEEN

BASEMENT



**1406/36 Oxford Street, Epping**

DISCLAIMER: PLANS SHOWN ARE FOR PRESENTATION PURPOSES AND ARE NOT PART OF ANY LEGAL DOCUMENT. ALL MEASUREMENTS AND FIGURES ARE APPROXIMATE.