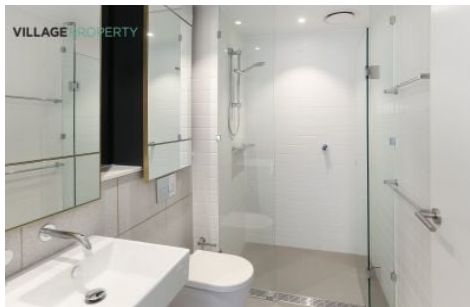


VILLAGE PROPERTY



3222/65 Tumbalong Boulevard Haymarket NSW

1 1 1

Available from 14th November -

Unmatched in refinement or setting, Darling One apartments are some of the most exquisite residences to occupy premier positions in Sydney.

Lease periods are 6-12 months.

- * Well-proportioned open plan designs with high ceilings and wide wooden floorboards
- * Large Bedroom with wall-to-wall wardrobe
- * Chic kitchen layout with benches and Miele gas appliances
- * Zone-ducted air conditioning
- * European laundry

[For full version visit the website](https://www.villageproperty.com.au)

Type : Apartment
Price : \$950 Per Week
View : <https://www.villageproperty.com.au/lease/nsw/sydney-city/haymarket/residential/apartment/7762888>



Kate Zhang
1300 62 44 00

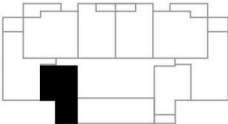
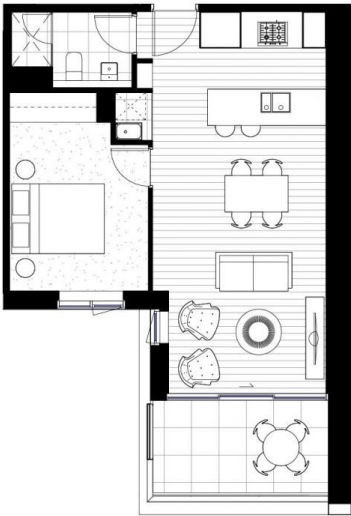
<https://www.villageproperty.com.au>

Darling One

SKYHOMES & APARTMENTS

LAYOUT PLAN	
apartment type	I
apartment no.	61, 71, 81, 91, 101, 111, 121, 131, 141, 151, 161, 171, 181, 191, 201, 211, 221, 231, 241, 251, 261, 271, 281, 291, 301
bedrooms	1
apartment area	50 m ²
balcony area	8 m ²
total apartment area	58 m ²

The plan is an indicative floor plan only as of April 2014. This plan is a guide only and does not constitute an offer or a contract and is subject to compliance with all laws and regulatory approvals from all relevant authorities. All areas, diagrams, dimensions and specifications shown are approximate only and are subject to survey on completion of construction. All details are subject to change without notice. Prospective purchasers are encouraged to make their own assessments and seek their own professional advice.



DARLING SQ.
SYDNEY

