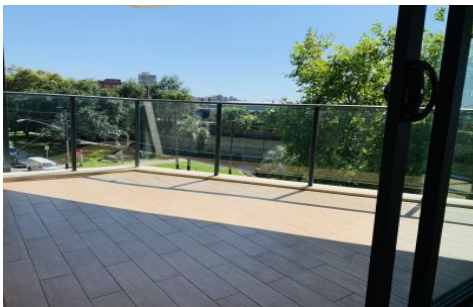


# VILLAGE PROPERTY



**510/80 Alfred Street Milsons Point NSW**

**2** **2** **1**

Set in the Bridgehill Residences in a harbourside precinct, this stunning two bedroom apartment features luxurious interiors, in the highly sought after and exclusive area of the Milsons Point peninsula.

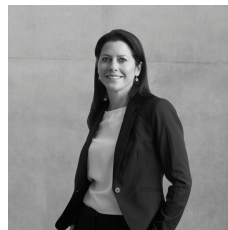
Take advantage of this limited opportunity to live in a highly desirable location.

Key features:

- Large bedrooms with built-in mirrored wardrobes
- Modern bathrooms with storage and large showers
- Quality floating timber floorboards throughout
- Gourmet kitchen with stone bench top, mirrored splash back & premium Miele appliances
- Large open plan living and kitchen
- Internal laundry with dryer,
- Floor to ceiling windows

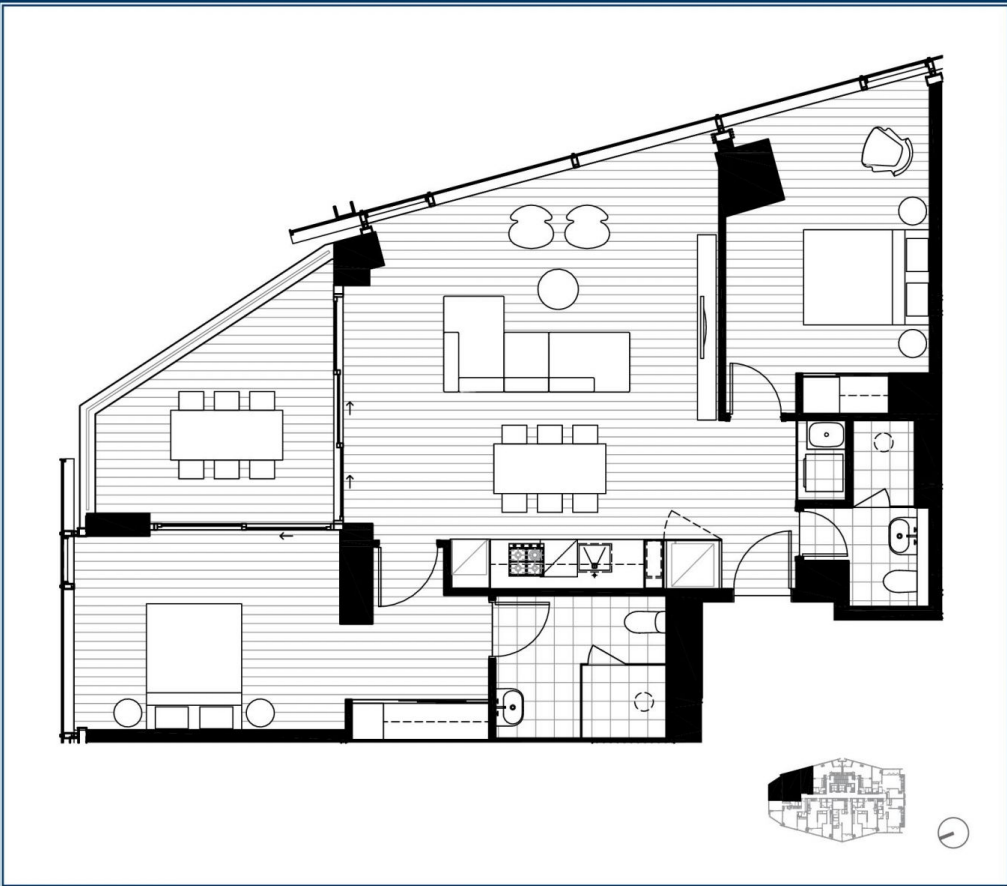
**Price** : \$1250 Per Week

**View** : <https://www.villageproperty.com.au/lease/nsw/north-shore-lower/milsons-point/residential/apartment/7768037>



**Melanie Brown**  
**1300 62 44 00**

<https://www.villageproperty.com.au>



**BRIDGEHILL**  
RESIDENCES  
MILSONS POINT

## 2 BEDROOM

510, 610, 710, 810, 909,  
1009, 1109, 1209, 1309,  
1509, 1609

INTERNAL AREA: 91M<sup>2</sup>  
EXTERNAL AREA: 11M<sup>2</sup>  
TOTAL: 102M<sup>2</sup>

[bridgehillresidences.com.au](http://bridgehillresidences.com.au)  
1800 207 177

Disclaimer: This layout plan was produced prior to construction and has been prepared for marketing purposes only. The information is believed to be correct but is not guaranteed. Changes may be made during construction and dimensions, areas, fittings and fixtures are subject to change in accordance with the contract for sale. The position of furniture and furnishings should not be taken to be indication of final positions of power points, tv connections points and the like. Prospective purchaser must rely on their contract for sale for the list of inclusions. Bulkheads for services are not depicted.

**BRIDGEHILL**

**CBRE**