

VILLAGE PROPERTY



106/1 Duntroon Street Hurlstone Park NSW

2 2 1

Nestled within the prestigious Wattle Hill Development, step into this immaculately designed two-bedroom unit, perfectly appointed to offer an impeccable lifestyle of luxury and convenience.

Bathed in natural sunlight and quality interior finishes, this home is meticulously crafted to optimize space and low maintenance living. From the bedrooms plush carpets, complimented by the luxurious floorboards throughout its both large open living and dining spaces, effortlessly flowing to the entertainers balcony. In addition to the kitchen's stone benchtops and Smeg appliances, this home designed for state-of-the-art living.

Located on the border of Dulwich Hill and Canterbury, you

[For full version visit the website](https://www.villageproperty.com.au)

Type : Apartment

View : <https://www.villageproperty.com.au/sale/nsw/cant-erburybankstown/hurlstone-park/residential/apartment/7775296>

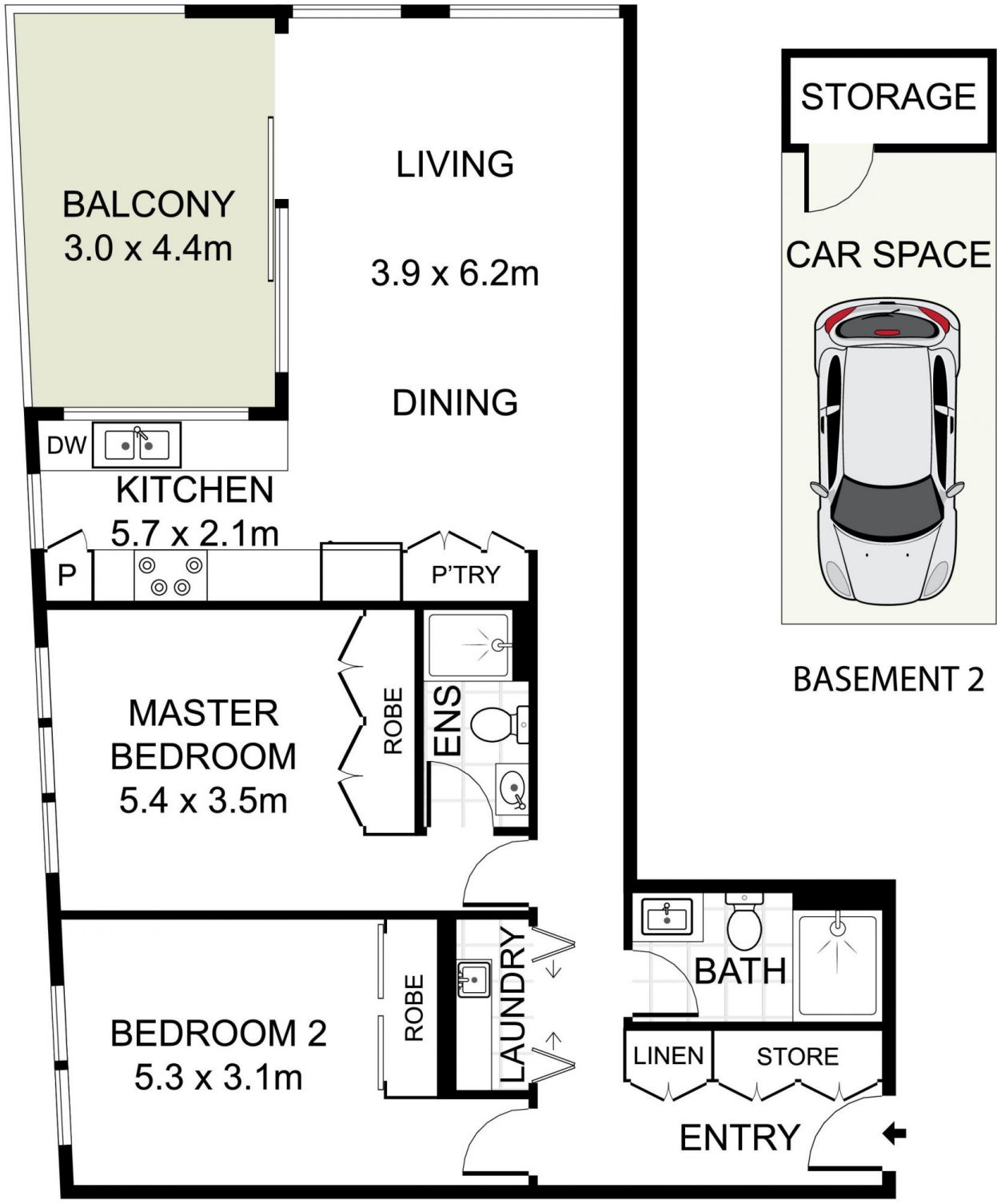


Jack Williams
1300 62 44 00



Gene Kingston
1300 62 44 00

<https://www.villageproperty.com.au>



LEVEL ONE



106/1 Duntroon Street, Hurlstone Park

DISCLAIMER: PLANS SHOWN ARE FOR PRESENTATION PURPOSES AND ARE NOT PART OF ANY LEGAL DOCUMENT. ALL MEASUREMENTS AND FIGURES ARE APPROXIMATE.