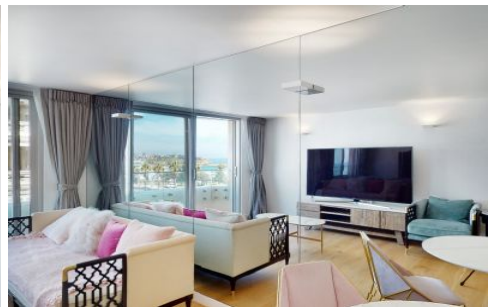
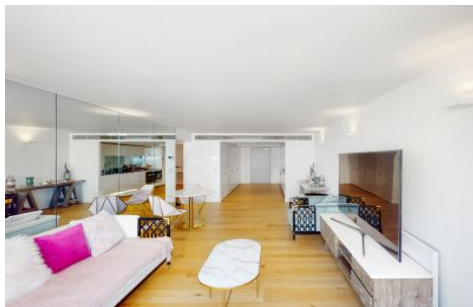


VILLAGE PROPERTY



305/180 Campbell Parade Bondi Beach NSW

2  **1**  **1** 

Available 7th December

Entrance via Curlewis Lobby

Presented in the iconic 'Pacific Bondi' offering contemporary living for those seeking the ultimate luxury lifestyle perfectly located only metres to the famous Bondi Beach and surrounded by abundance of popular cafes, restaurants and shops. Refurbished with new curtains and new mirror reflecting the Bondi Beach view that can be seen from the kitchen whilst cooking.

Steps to the sand and surf, scenic coastal walk for your leisure. Situated on level 3, this stunning modern residence offers the highest quality of finishes combined with a famous center beachfront location. Pacific Bondi offers unsurpassed living with Woolworths shopping at your

Price : \$1650 Per Week DEPOSIT TAKEN

View : <https://www.villageproperty.com.au/lease/nsw/eastern-suburbs/bondi-beach/residential/apartment/7799594>

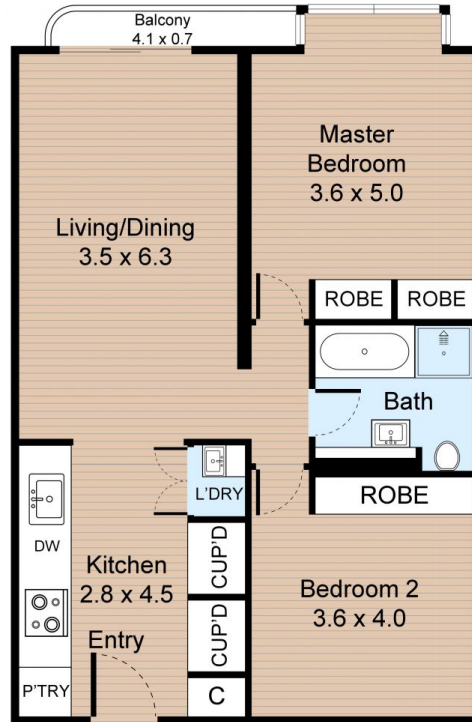


Alan Wang
1300 62 44 00

<https://www.villageproperty.com.au>

Unit 305, 180 Campbell Parade, Bondi Beach

2 Bed 1 Bath



Internal : 81m²
External : 7m²



FLOOR PLAN

VILLAGE PROPERTY

All information contained herein is gathered from our 3D scanned tours via Matterport. Whilst the 3D scanning technology is very accurate we cannot guarantee its accuracy and interested parties should rely on their own enquiries.