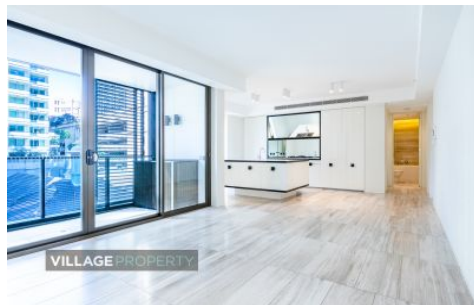
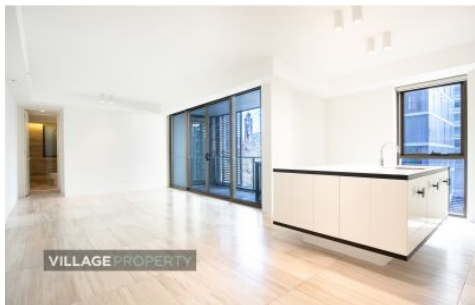


VILLAGE PROPERTY



S610/178 Thomas Street Haymarket NSW

2 2 1

Available NOW

Lease term 6 months

When you think of where to live, location is key. "The Quay" in Sydney's Haymarket is such a place. This beautifully designed, modern apartment block not only provides you with all the mod-cons at home, but easy access to all services, sights and attractions in this superb location in the heart of Sydney.

Lease periods are 6-12 months.

Key features:

- Quality Two Bedroom Apartment with security parking

[For full version visit the website](https://www.villageproperty.com.au/lease/nsw/sydney-city/haymarket/residential/apartment/7808222)

Type : Apartment
Price : \$1,000 Per Week
Land Size : 91 sqm
View : <https://www.villageproperty.com.au/lease/nsw/sydney-city/haymarket/residential/apartment/7808222>



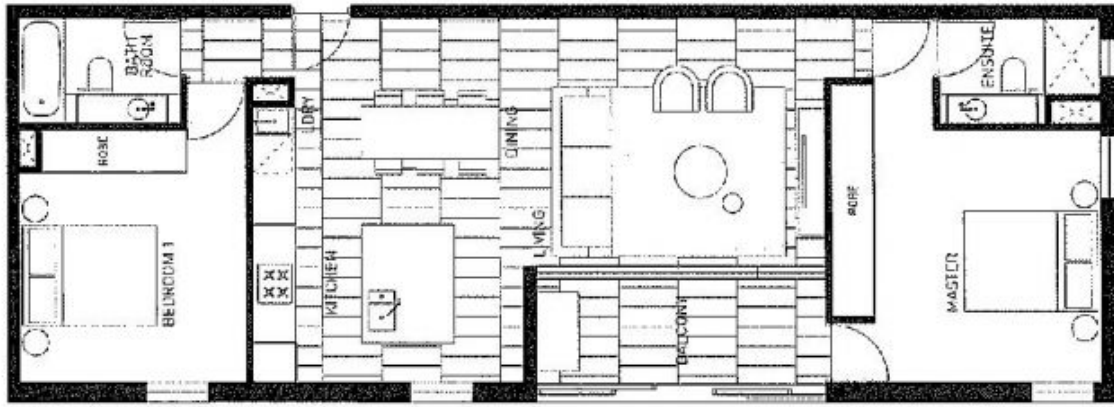
Kate Zhang
1300 62 44 00

<https://www.villageproperty.com.au>

TYPE 21

APARTMENTS

S2.10	S7.10	S11.10	S16.10
S3.10	S8.10	S12.10	S17.10
S5.10	S9.10	S13.10	
S6.10	S10.10	S15.10	



AREA

Internal: 82m²

Balcony: 7m²

SCALE

1:100 @ A4

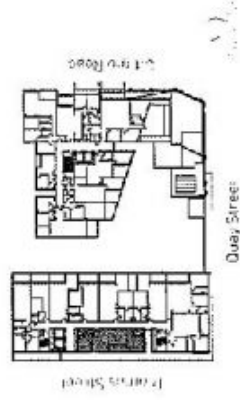
DWG NO

ID:227

REV

C

BUILDING



Contact

1800 667 321

www.treque.com.au

THE QUAY
HARBOUR

CBRE

These documents are for information only and do not constitute an offer of any financial product. The information contained in these documents is for general information only and is not intended to be used as a basis for investment decisions. The information contained in these documents is subject to change without notice. The information contained in these documents is not intended to be used as a basis for investment decisions. The information contained in these documents is not intended to be used as a basis for investment decisions. The information contained in these documents is not intended to be used as a basis for investment decisions.