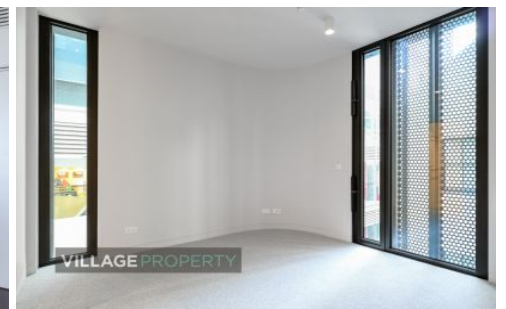
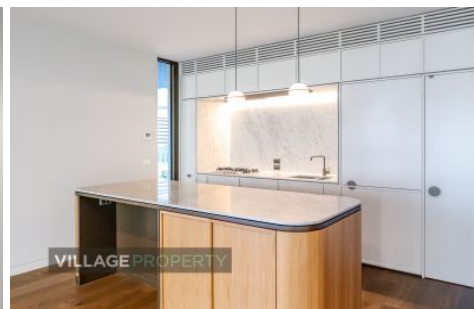
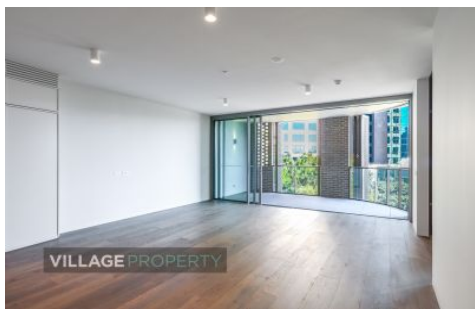


# VILLAGE PROPERTY



**201/6 Loftus Street Sydney NSW**

Available from 6th December

Quay Quarter Lanes, an unparalleled opportunity to live in a home designed for the very heart of Sydney. Village Property will proudly be handling the leasing of these recently completed residences, these residences are a must to inspect. An unparalleled opportunity to live in the very heart of Sydney while preserving the privacy and boutique amenity of a home in the city. Located in a boutique building of only 30 apartments you are located just metres from Circular Quay and the Light Rail.

- High ceilings, Timber floors, Designer finishes
- Spacious bedrooms with soft carpet and built in wardrobes
- Ducted r/c air-con, video intercom entry
- Stone kitchen with integrated appliances and gas cooking

2  2 

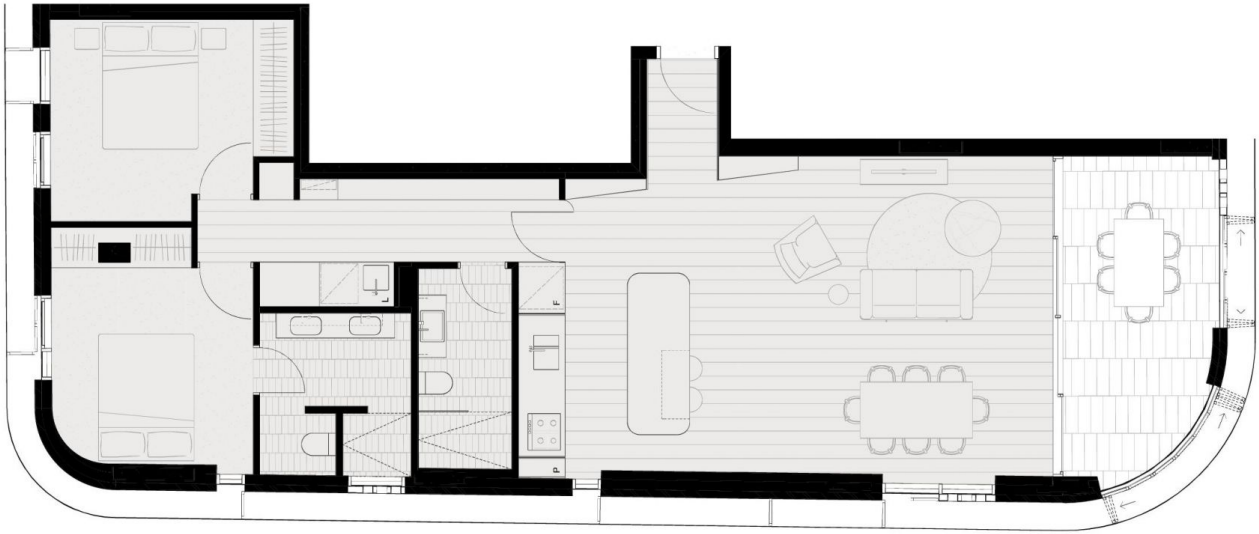
**Price** : \$1,250 per week

**View** : <https://www.villageproperty.com.au/lease/nsw/sydney-city/sydney/residential/apartment/7809352>

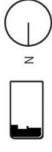


**Aimee-Jo Azzi**  
1300 62 44 00

<https://www.villageproperty.com.au>



## 8 Loftus Street Unit A.03.01



N



2 Bed



2 Bath

Indoor area	90m <sup>2</sup>
Outdoor area	12m <sup>2</sup>
Total area	102m <sup>2</sup>

loftuslane.com.au  
1800 316 505

**CBRE** | **AMPCAPITAL**