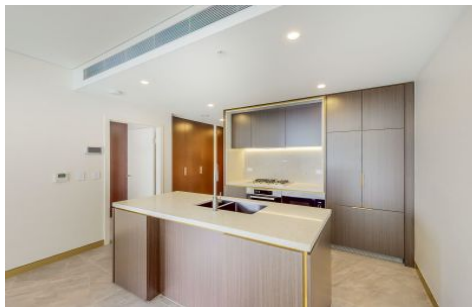
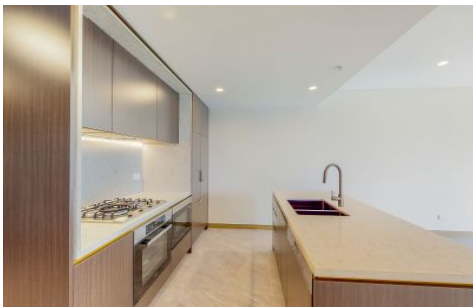


VILLAGE PROPERTY



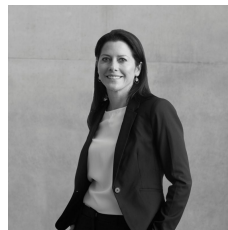
1302/88 Christie Street St Leonards NSW

1 1

Eighty Eight is the modern building at popular St. Leonard's. Very convenient location with direct access to the train station, buses at your doorstep and only 5 mins to the new Metro Station. Gorgeous modern apartments above, and below is an exciting new retail and dining precinct. Eighty Eight is set to transform St. Leonard's into the new Chatswood with specialty dining, cafes and major supermarket Coles.

- Spacious open plan living opens on to the large balcony.
- Floor to ceiling windows with stunning natural light
- Large balcony for entertaining
- Luxurious new finishes throughout
- Bespoke kitchen with quality appliances, built-in fridge, microwave, oven & dishwasher
- Large bedroom with built in robes
- Modern bathrooms with large frameless shower

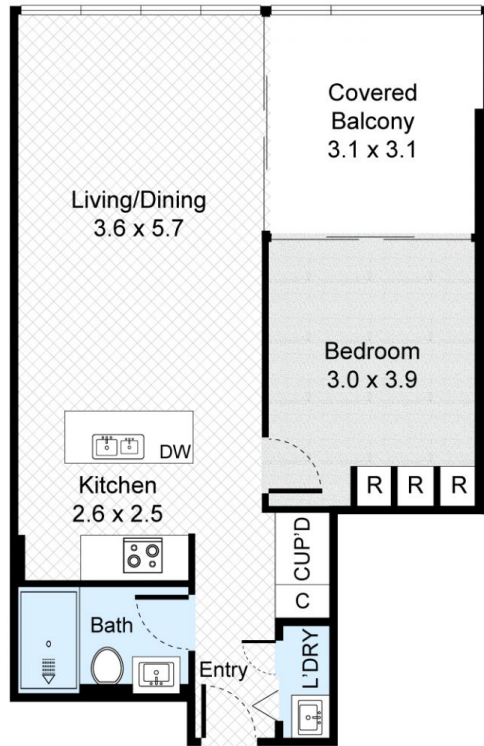
Price : Deposit Taken
Building Size : 51 sqm
View : <https://www.villageproperty.com.au/lease/nsw/north-shore-lower/st-leonards/residential/apartment/7820237>



Melanie Brown
1300 62 44 00

Unit 1302, 88 Christie Street, St Leonards

1 Bed 1 Bath



Internal : 52m²
External : 10m²



FLOOR PLAN

VILLAGE PROPERTY

All information contained herein is gathered from our 3D scanned tours via Matterport. Whilst the 3D scanning technology is very accurate we cannot guarantee its accuracy and interested parties should rely on their own enquiries.