

VILLAGE PROPERTY



3248/65 Tumbalong Boulevard Haymarket NSW

2  **2** 

Unmatched in refinement or setting, Darling One apartments are some of the most exquisite residences to occupy premier positions in Sydney.

Lease periods are 6-12 months.

- Well-proportioned open plan designs with high ceilings and wide wooden floorboards
- Large Bedroom with wall-to-wall wardrobe
- Chic kitchen layout with benches and MIELE gas appliances
- Zone-ducted air conditioning
- European laundry
- Flawlessly crafted for the low maintenance lifestyle
- Video intercom and swipe access

Type : Apartment

Price : \$1400 Per Week

View : <https://www.villageproperty.com.au/lease/nsw/sydney-city/haymarket/residential/apartment/7821726>



Kate Zhang
1300 62 44 00

[For full version visit the website](https://www.villageproperty.com.au)

<https://www.villageproperty.com.au>

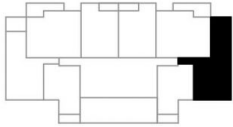
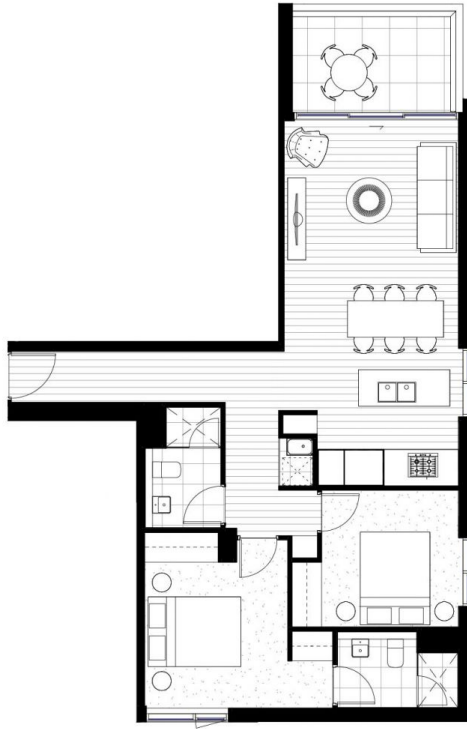
Darling One

SKYHOMES & APARTMENTS

LAYOUT PLAN

apartment type	F
apartment no.	6F, 7F, 8F, 9F, 10F, 11F, 12F, 13F, 14F, 15F, 16F, 17F, 18F, 19F, 20F, 21F, 22F, 23F, 24F, 25F, 26F, 27F, 28F, 29F, 30F, 31F, 32F, 33F, 34F, 35F, 36F
bedrooms	2
apartment area	76 m ²
balcony area	7 m ²
total apartment area	83 m ²

This plan is an indicative floor plan only, as of April 2014. This plan is a guide only and does not constitute an offer or a contract and is subject to compliance with all laws and regulatory approval from all relevant authorities. All areas, dimensions, developments and specifications shown are approximate only and are subject to survey on completion of construction. All details are subject to change without notice. Prospective purchasers are encouraged to make their own assessments and seek their own professional advice.



DARLING SQ.
SYDNEY

Lend Lease