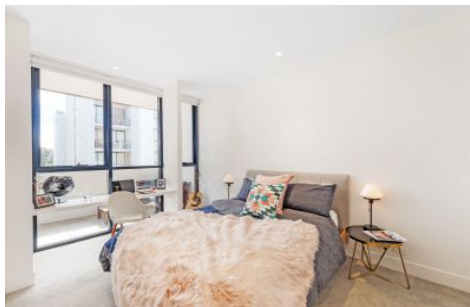


VILLAGE PROPERTY



A407/72 MacDonald Street Erskineville NSW

2 2 1

Available 20th December

Located in a highly regarded development with lush communal gardens and a shared rooftop area, this modern apartment is bathed in natural light. Eve has brought a new standard of living to the heart of Erskineville's vibrant village culture.

Ideally situated only moments from the vibrant Enmore and Newtown entertainment precinct, the luscious greenery of Sydney Park and Moore Park grounds. Surrounded by abundance of cafes and restaurants, and weekend markets dotted throughout the energetic inner west. Short stroll to St Peter or Erskineville Train station and Woolworths Metro Park Sydney minutes walk away for your everyday

Type : Apartment

Price : \$900 Per Week DEPOSIT TAKEN

View : <https://www.villageproperty.com.au/lease/nsw/inner-west/erskineville/residential/apartment/7823054>



Alan Wang
1300 62 44 00

[For full version visit the website](https://www.villageproperty.com.au)

<https://www.villageproperty.com.au>

EVE

BY Fridcorp™



Macdonald St

APARTMENT A407

Internal 72.4m²
External 11.0m²
Total 83.4m²

For more information
1800 221 336
EveByFridcorp.com.au

Disclaimer: This plan is a guide only and does not constitute an offer or contract. Please note changes may be made during the development and areas, fittings, fixtures and specifications are subject to change without notice in accordance with the terms of the contract of sale. All parties must rely on their own investigation to validate this information as it is not guaranteed. No liability will be accepted for any inaccuracy or misstatement. (B)

**Hecker
Guthrie**



CBRE