

VILLAGE PROPERTY



102/268-280 Oxford Street Bondi Junction NSW

2  2  1 

Available NOW

Presented in 'The Palisades', this oversized north facing apartment is situated in a prestige complex that is located in one of the most popular locations in Bondi Junction and close to all amenities. Sun-bathed with plenty of natural light and spacious balcony perfect for leisure and recreation. Secure building offering great facilities including gymnasium and outdoor swimming pool available to residents.

This prime position residence provides great access to transport and shopping, while providing a stylish and comfortable living space. Only minutes walk from Westfield shopping centre, Eastgate shopping centre, Bondi Junction Train Station, Stylish Cafes, Bars, Gyms and Cinemas. Live close to Bondi Beach and Centennial Park

Price : \$1075 per week DEPOSIT TAKEN

View : <https://www.villageproperty.com.au/lease/nsw/eastern-suburbs/bondi-junction/residential/apartment/7829251>

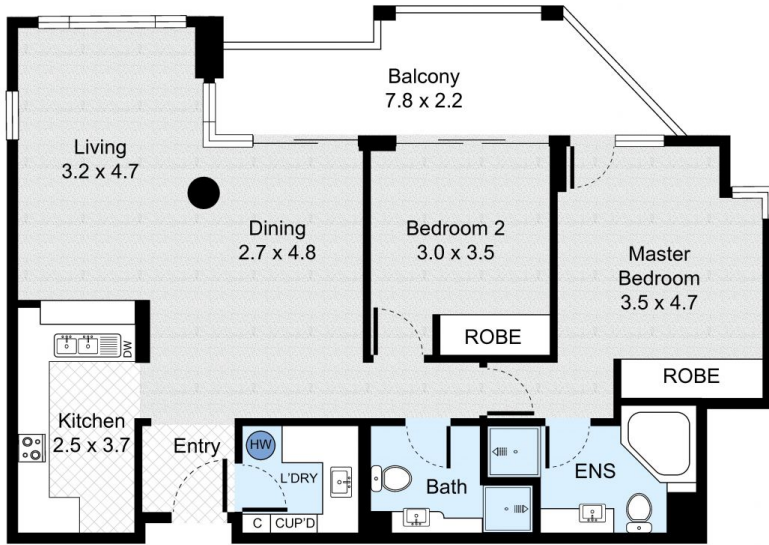


Alan Wang
1300 62 44 00

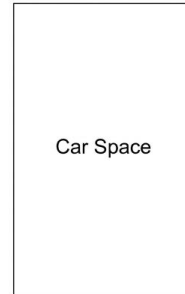
Unit 102, 268-280 Oxford Street, Bondi Junction



2 Bed 2 Bath 1 Car



FLOOR PLAN



(Not In Position)

CAR SPACE

Internal : 89m²
External : 13m²



VILLAGE PROPERTY

All information contained herein is gathered by Little Hinges. Whilst the scanning technology is highly reliable, we cannot guarantee its accuracy and interested parties should rely on their own enquiries.