

# VILLAGE PROPERTY



**1941/9 Maple Tree Road Westmead NSW**

**3**  **2**  **2** 

Available Now

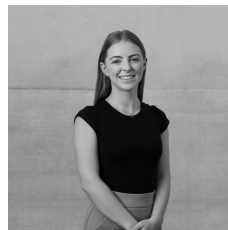
Just 2 minutes to the train station and 5 minutes to Westmead Hospital. 35 minutes to Sydney CBD and 1 stop on the train to Parramatta. Westmead's premier residence sets the pace for Sydney's West offering an enviable lifestyle of the highest quality.

Features Include:

- Three spacious bedrooms with Built in Robes to all
- Ensuite to main bedroom
- High quality timber floors throughout
- Kitchen with stone bench-tops and splash-backs, Smeg appliances including gas cooktop, dishwasher and microwave
- Large living area
- Ducted air conditioning throughout

**Price** : \$920 Per Week

**View** : <https://www.villageproperty.com.au/lease/nsw/parramatta/westmead/residential/apartment/7838829>

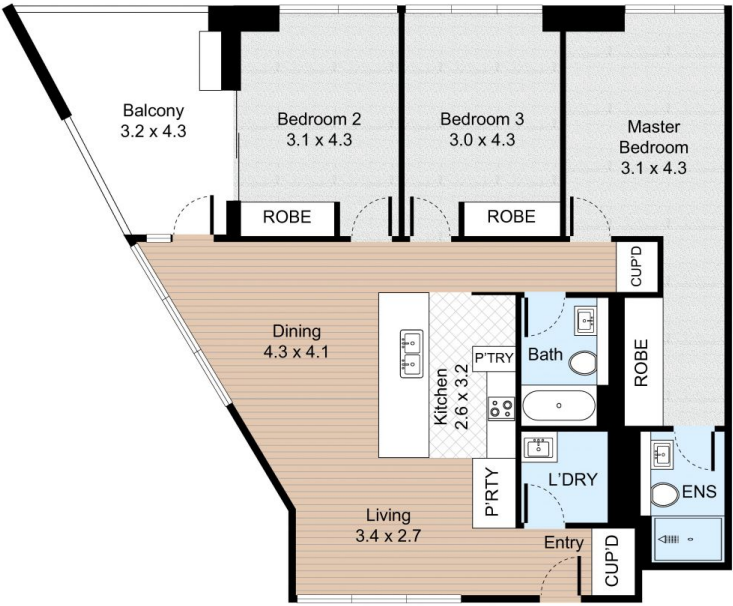


**Jessica Deagan**  
**1300 20 55 69**

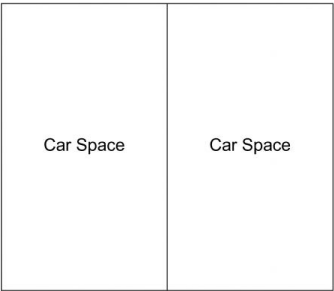
<https://www.villageproperty.com.au>

Unit 1941, 9 Maple Tree Road, Westmead

3 Bed 2 Bath 2 Car



FLOOR PLAN



CAR SPACE

Internal : 107m<sup>2</sup>  
External : 14m<sup>2</sup>



VILLAGE PROPERTY

All information contained herein is gathered by Little Hinges. Whilst the scanning technology is highly reliable, we cannot guarantee its accuracy and interested parties should rely on their own enquiries.