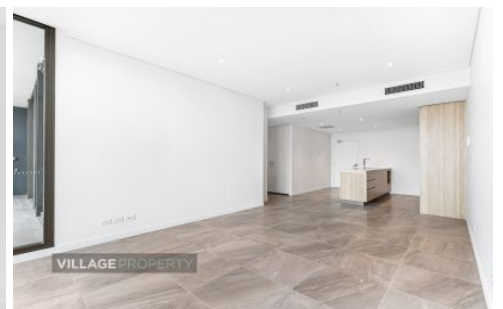
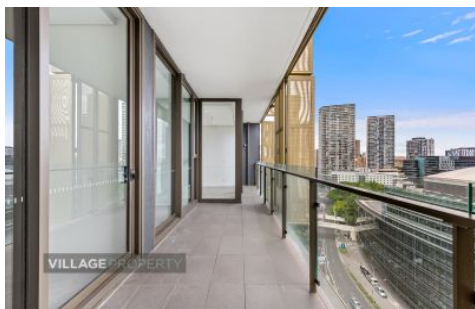


# VILLAGE PROPERTY



1502/188 Day Street Sydney NSW

2  2  1 

Next inspection on 3rd January 3.40pm

Proudly set high above the eastern edge of the revitalised Darling Harbour lifestyle precinct, 'Radiance' is a landmark of contemporary inner city living. This stunning residence will be the epitome of effortless low maintenance quality and timeless sophistication.

- Well configured with invitingly spacious modern interiors
- Generous open plan entertaining areas
- Double bedrooms with built in robes
- Designer kitchen has gas appliances and stone bench tops
- Study alcove, security intercom and a European laundry
- Simply a stroll to Haymarket culture, transport and cafes

**Type** : Apartment

**Price** : \$1,200 per week

**View** : <https://www.villageproperty.com.au/lease/nsw/sydney-city/sydney/residential/apartment/7843970>



**Kate Zhang**  
1300 62 44 00

[For full version visit the website](https://www.villageproperty.com.au)

<https://www.villageproperty.com.au>

