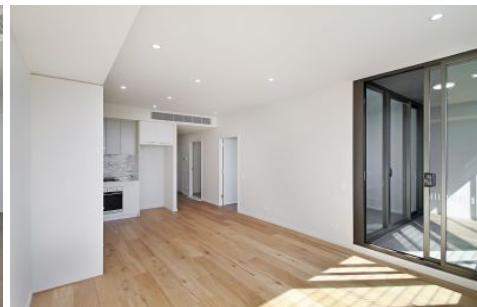


VILLAGE PROPERTY



109/8 Wharf Road Gladesville NSW

1 1 1

Available NOW

DEPOSIT TAKEN. Saturday inspection cancelled

"Wharf Square" sits proudly at the crest of Victoria Rd, Gladesville and sets the pace for executive style residences in one of Sydney's most liveable areas. Ideally located close to transport, retail hubs, cafes, restaurants and local amenities including schools and park lands. A communal rooftop terrace offers uninterrupted panoramic views to the City and Sydney's suburban surrounds. With BBQ, bathroom facilities and ample seating this is the perfect position to relax or entertain.

Lease periods are 6-12 months.
No pets preferred.

Price : \$600 per week DEPOSIT TAKEN

View : <https://www.villageproperty.com.au/lease/nsw/northern-suburbs/gladesville/residential/apartment/7861571>



Alan Wang
1300 62 44 00