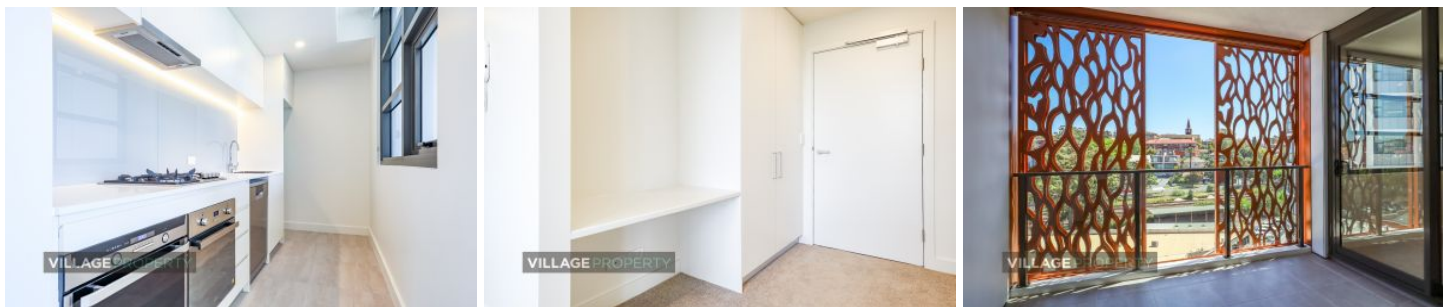


# VILLAGE PROPERTY



**225/213 Princes Highway Arncliffe NSW**

2 2 1

Available NOW

\*Entrance via Building G on level 6\*

Unmatched in refinement and superbly located this beautiful apartment is a unique opportunity to experience quintessential living in an urban lifestyle. This stunning modern development also features a community centre with basketball courts and exercise areas as well as plenty of retail options making this the ideal locale for those who like to enjoy new and refined living in comfort and convenience. Minutes walk away to Arncliffe Train Station and 15 minutes train ride to the CBD. Only 4 minutes drive to Woolworths Wolli Creek and 5 minutes drive to Rockdale Plaza.

**Type** : Apartment

**Price** : \$750 Per Week DEPOSIT TAKEN

**View** : <https://www.villageproperty.com.au/lease/nsw/st-george/arncliffe/residential/apartment/7861641>



**Alan Wang**  
**1300 62 44 00**

[For full version visit the website](https://www.villageproperty.com.au)

<https://www.villageproperty.com.au>