




VILLAGE PROPERTY



609/80 Alfred Street Milsons Point NSW

2  2  1 

Available January 16th

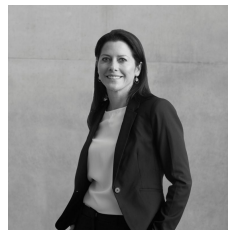
Stunning and prestigious, this architecturally designed harbour residence is sure to impress. Inside, well proportioned interiors are bathed in natural sunshine, while your alluringly large living room leading you through to your own external balcony.

Features include:

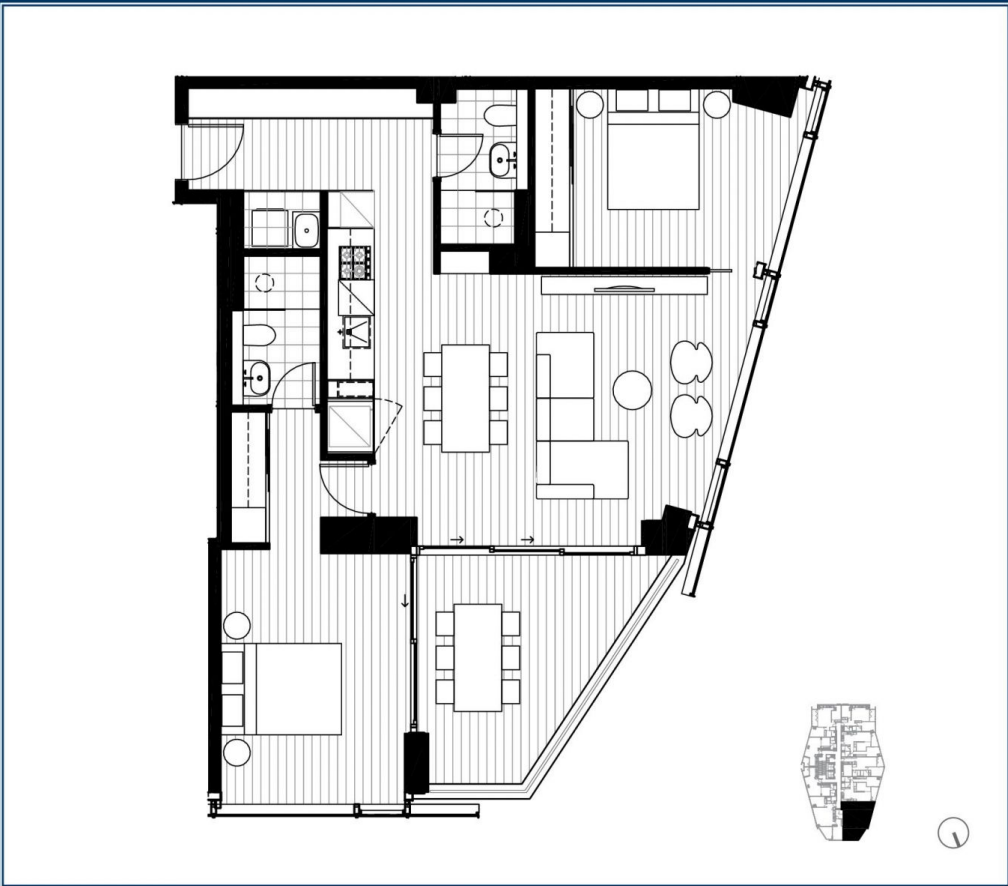
- Large bedrooms with built-in wardrobe
- Modern bathrooms with good storage
- Quality floating timber floorboards throughout
- Gourmet kitchen with stone bench top, mirrored splash back & premium Miele appliances
- Internal laundry with dryer,
- Zone-ducted reverse cycle air conditioning

Price : Deposit Taken

View : <https://www.villageproperty.com.au/lease/nsw/north-shore-lower/milsons-point/residential/apartment/7864208>



Melanie Brown
1300 62 44 00



BRIDGEHILL
RESIDENCES
MILSONS POINT

2 BEDROOM

509, 609, 709, 809, 908,
1008, 1108, 1208, 1308,
1508, 1608

INTERNAL AREA: 81m²

EXTERNAL AREA: 11m²

TOTAL: 92m²



bridgehillresidences.com.au
1800 307 177

Disclaimer: This layout plan was produced prior to construction and has been prepared for marketing purposes only. The information is believed to be correct but is not guaranteed. Changes may be made during construction and dimensions, area, fittings and fixtures are subject to change in accordance with the contract for sale. The position of furniture and fittings should not be taken to be indicative of final positions of power points, tv connections points and the like. Prospective purchasers must rely on their contract for sale for the list of inclusions. Bulkheads for services are not depicted.



CBRE