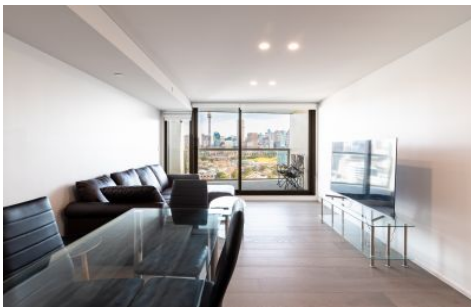


VILLAGE PROPERTY



907/226 Victoria Street Potts Point NSW

2  **2** 

Available NOW

Perfectly positioned, inner-city residence bringing together luxury interiors and architectural excellence. The Omnia building delivers panoramic, sky sweeping views of the Sydney Harbour Bridge, Opera House, and Sydney CBD.

Close proximity to Sydney's finest restaurants cafes and bars as well as the ultimate convenience of public transport links creates a very elite and exquisite lifestyle.

Lease periods are 6-12 months. Pets at landlord's discretion.

- Fully furnished

Type : Apartment

Price : \$1295 per week FURNISHED

View : <https://www.villageproperty.com.au/lease/nsw/ea-stern-suburbs/potts-point/residential/apartment/7865517>



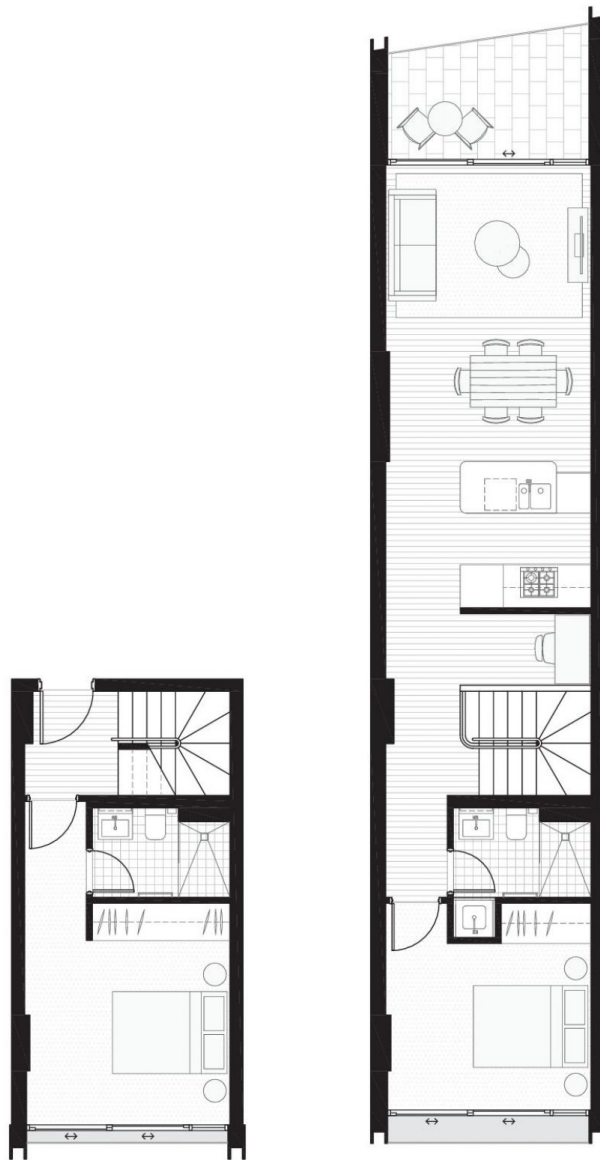
Alan Wang
1300 62 44 00

[For full version visit the website](https://www.villageproperty.com.au)

<https://www.villageproperty.com.au>

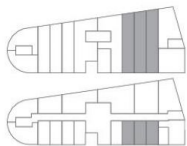
OMNIA

POTTS POINT SYDNEY
BY GREENLAND



LOWER FLOOR

UPPER FLOOR



TWO BEDROOM
TWO BATHROOM



Apartments

5.07, 5.08, 5.09, 7.07, 7.08, 7.09,
9.06, 9.07, 9.08, 15.06, 15.07,
15.08, 17.06, 17.07, 17.08

Internal 81-97m²
External 5-8m²
Total 86-105m²

1800 427 008
omniapottspoint.com.au

 **Greenland** **CBRE**

Disclaimer: The particulars are set out as a general outline for the guidance of intending purchasers and do not constitute an offer or form part of any offer or contract. All descriptions, dimensions, references to conditions and necessary permutations for use and other details are given in good faith and are believed to be correct, but do not consider the specific objectives, situations or needs of any particular intending purchaser. Any intending purchasers should not rely on them as a promise, a warranty or a statement or representation of fact, but must satisfy themselves by inspection or otherwise to the correctness of each item, and where necessary seek appropriate professional advice. No third party supplier or their agents has any authority to make or give any promise, representation or warranty in relation to this property.