

VILLAGE PROPERTY



1505/188 Day Street Sydney NSW

2  2  1 

Available from 31st January -

Proudly set high above the eastern edge of the revitalised Darling Harbour lifestyle precinct, 'Radiance' is a landmark of contemporary inner city living, with the great location to the Darling Harbour, Chinatown, restaurants and public transports.

Key features:

- Bedroom with Built In wardrobes
- Well configured with invitingly spacious modern interiors
- Designer kitchen has gas appliances and stone bench tops
- Ducted air-conditioning and intercom
- Internal laundry with dryer and washin machine
- Excellent storage throughout

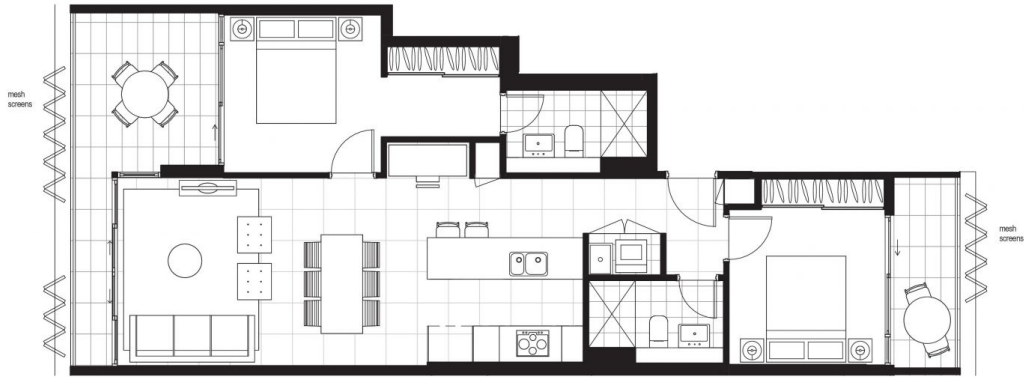
Price : \$1,200 Per Week

View : <https://www.villageproperty.com.au/lease/nsw/sydney-city/sydney/residential/apartment/7867425>



Kate Zhang
1300 62 44 00

<https://www.villageproperty.com.au>



Disclaimer: Please note that the layout plan was produced prior to construction. The information is believed to be correct but is not guaranteed. Changes may be made during construction and dimensions, areas, fittings, finishes and specification are subject to change without notice in accordance with the provisions of the contract for sale. The furniture and furnishings depicted are not included with any sale and purchasers must refer to their contract for sale for the list of inclusions. The position of the furniture and furnishings should not be taken to be indicative of final positions of power points, tv connection points and the like. Prospective purchasers must rely on their own enquiries. All graphics including the layout and balustrades and the like are indicative only. Balustrades for services are not depicted. The layout plan is at an unspecified scale (1:50).



RADIANCE
DARLING HARBOUR

2 BEDROOMS + MEDIA

LEVEL 7-16

APARTMENT
705, 805, 905, 1005,
1105, 1205, 1305,
1505, 1605

INTERNAL
72 m²

BALCONY
15 m²

TOTAL
87 m²

1800 776 105
radianceapartments.com.au

LOFTX CBRE