

VILLAGE PROPERTY



503B/6-10 Nancarrow Avenue Meadowbank NSW

2 2 1

Available 15th February

The long-awaited "Harvard" building in Shepherds Bay is the area's jewel in the crown offering a waterfront position, luxurious designer finishes and the most convenient access to Meadowbank's surrounds.

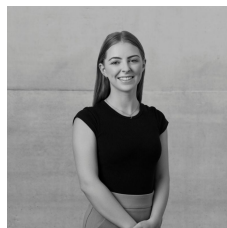
Type : Apartment

Price : \$820 Per Week

View : <https://www.villageproperty.com.au/lease/nsw/northern-suburbs/meadowbank/residential/apartment/7883951>

Features Include:

- Two spacious bedrooms with built in robes
- Ensuite to main bedroom
- Modern gourmet designer kitchen with island bench and European electrical appliances
- Secure basement car space
- Reverse cycle air-conditioning
- Train station, ferry wharf and local buses are all within a



Jessica Deagan
1300 20 55 69

[For full version visit the website](https://www.villageproperty.com.au)

<https://www.villageproperty.com.au>