

# VILLAGE PROPERTY



**1006/1A Lawson Square Redfern NSW**

1 2

Available from 19th February -

Stunning views, award-winning design and luxury appointments combine to elevate TNT Residences to a whole new level. A truly special project for those looking to live life on the very edge of the Sydney CBD, TNT Residences brings a world of rich new experiences every day.

These exclusive apartments deliver a rare opportunity to enjoy cosmopolitan lifestyle in the front row seats of Australia's premier city.

Located at just a minute walk to Redfern Station and 3 kilometres from Sydney's lively CBD, TNT Residences boasts the convenience of inner-city life, while still serving as an oasis from the commotion.

**Price** : \$750 per week  
**Building Size** : 51 sqm  
**View** : <https://www.villageproperty.com.au/lease/nsw/eastern-suburbs/redfern/residential/apartment/7888474>

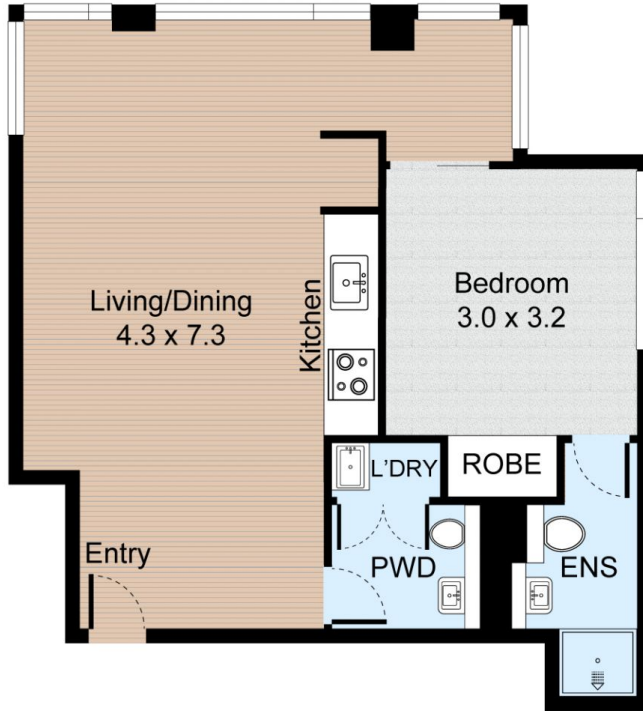


**Kate Zhang**  
1300 62 44 00

Unit 1006, 1A Lawson Square, Redfern



1 Bed 1.5 Bath



Internal : 52m<sup>2</sup>



FLOOR PLAN

**VILLAGE** PROPERTY

All information contained herein is gathered from our 3D scanned tours via Matterport. Whilst the 3D scanning technology is very accurate we cannot guarantee its accuracy and interested parties should rely on their own enquiries.