

# VILLAGE PROPERTY



416/32 Civic Way Rouse Hill NSW

2  2  1 

LEASED

Positioned just moments from the Rouse Hill Town Centre precinct, Proximity provides you with the perfect location for the ultimate combination of accessibility and lifestyle..

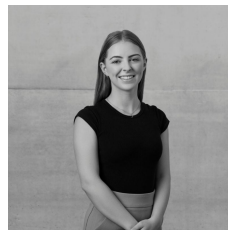
To keep your new home tidy, built-in storage is a major feature of this apartment, providing ample room in the kitchen, bathroom and bedroom.

You'll love having beautiful parks and open space right on your doorstep, while being moments from a life of convenience. Set in a highly desirable location with beautiful established trees, serene park-like surrounds and neighbouring heritage buildings. Nature strips connect directly from site to the nearby riding and walking trails, reserves and parks.

**Type** : Apartment

**Price** : LEASED

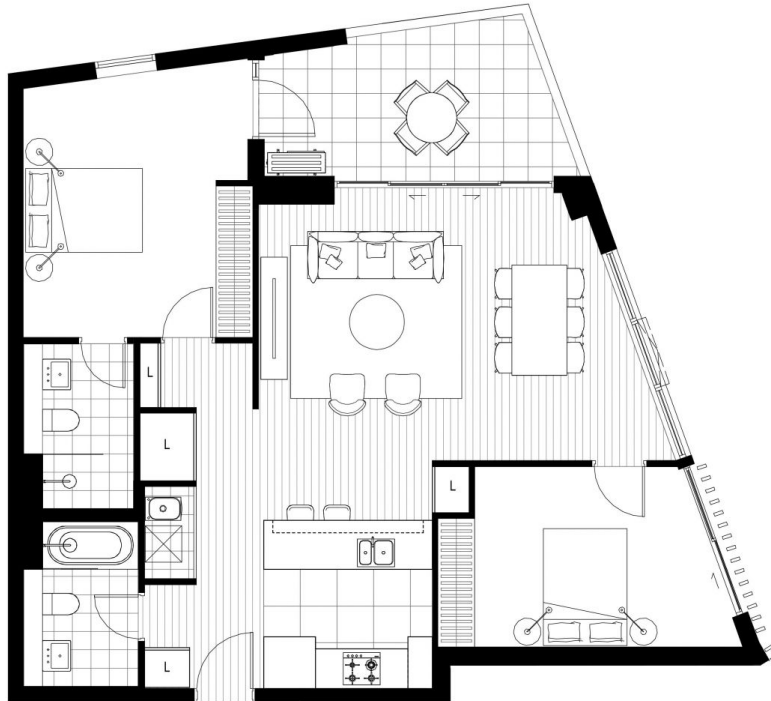
**View** : <https://www.villageproperty.com.au/lease/nsw/hills/rouse-hill/residential/apartment/7922028>



**Jessica Deagan**  
1300 20 55 69

[For full version visit the website](https://www.villageproperty.com.au)

<https://www.villageproperty.com.au>



# PROXIMITY

VIEWPOINT

BUILDING 4

**APT 117, 217,  
317, 416,  
516**

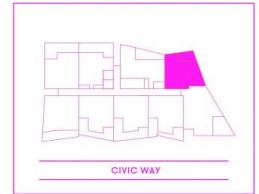
  
2

  
2

**TOTAL: 100 sqm**

INTERNAL 89 sqm

EXTERNAL 11 sqm



PROXIMITYROUSEHILL.COM.AU  
1300 031 262

Updated 24 November 2021 - Note: this plan is a guide only and does not constitute an offer or contract. Please note that changes may be made to the development during construction and elements such as areas, fittings, fixtures etc may change without notice. All parties should rely on their own investigation to validate this information as it is not guaranteed. No liability will be accepted for any inaccuracy or misstatement.

