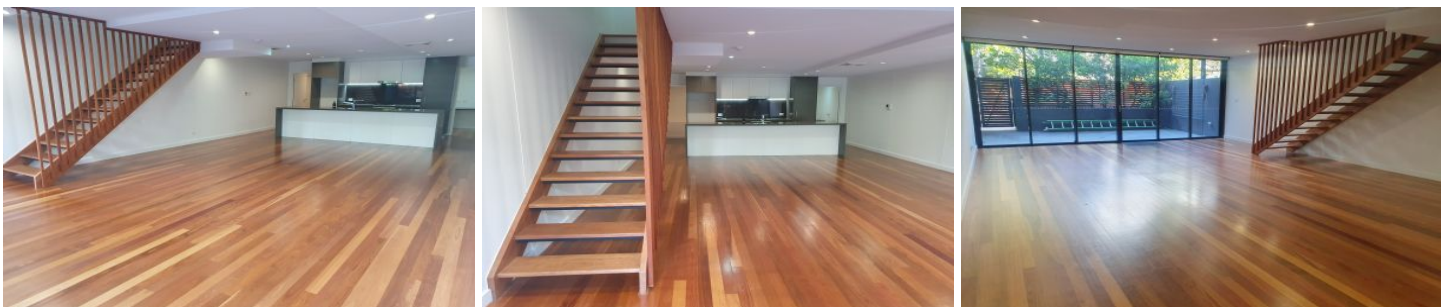


# VILLAGE PROPERTY



18/1 Gibbens Street Camperdown NSW

2 2 1

Available from 8th March -

Sugarmill is a boutique building within a dramatic warehouse transformation in a central, convenient and sought after Camperdown location. Walking distance to the University of Sydney, Royal Prince Alfred Hospital, restaurants, parks & markets. Just 10 minutes to the CBD by car, bus or train from Newtown station.

**Type** : Apartment

**Price** : \$1,000 Per Week

**View** : <https://www.villageproperty.com.au/lease/nsw/inner-west/camperdown/residential/apartment/7922742>

Features Include:

- Designer interiors feature sleek contemporary finishes & European appliances including gas top, oven and dishwasher
- Ideal long island kitchen benchtop

[For full version visit the website](https://www.villageproperty.com.au)



**Kate Zhang**  
1300 62 44 00

<https://www.villageproperty.com.au>