

# VILLAGE PROPERTY



**902/18 Loftus Street Sydney NSW**

2 2 1

Available NOW

Quay Quarter Lanes, an unparalleled opportunity to live in a home designed for the very heart of Sydney.

Comprised of 3 Boutique residential building these apartments will be a must to inspect and are sure to impress.

- High ceilings, engineered timber floors
- Spacious bedrooms all with built in wardrobes
- Ducted r/c air-con, video intercom entry
- Entertainers sized balconies with Harbour bridge views
- Including a storage cage in the basement
- Level lift access to lobby, shops, basement

**Type** : Apartment

**Price** : \$1,450 Per Week

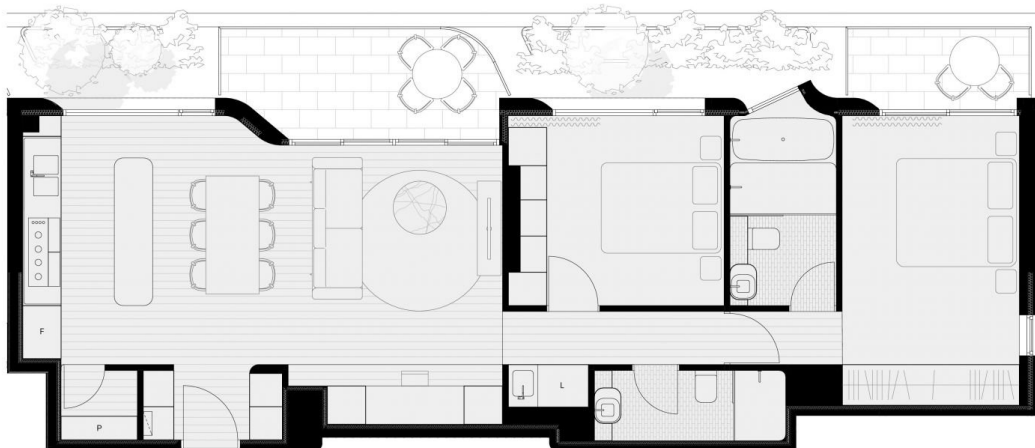
**View** : <https://www.villageproperty.com.au/lease/nsw/sydney-city/sydney/residential/apartment/7937904>



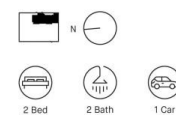
**Kate Zhang**  
1300 62 44 00

[For full version visit the website](https://www.villageproperty.com.au)

<https://www.villageproperty.com.au>



## 18 Loftus Street Unit B.09.02



Indoor area	85m <sup>2</sup>
Outdoor area	24m <sup>2</sup>
Total area	109m <sup>2</sup>

loftuslane.com.au  
1800 316 505

CBRE | AMPCAPITAL