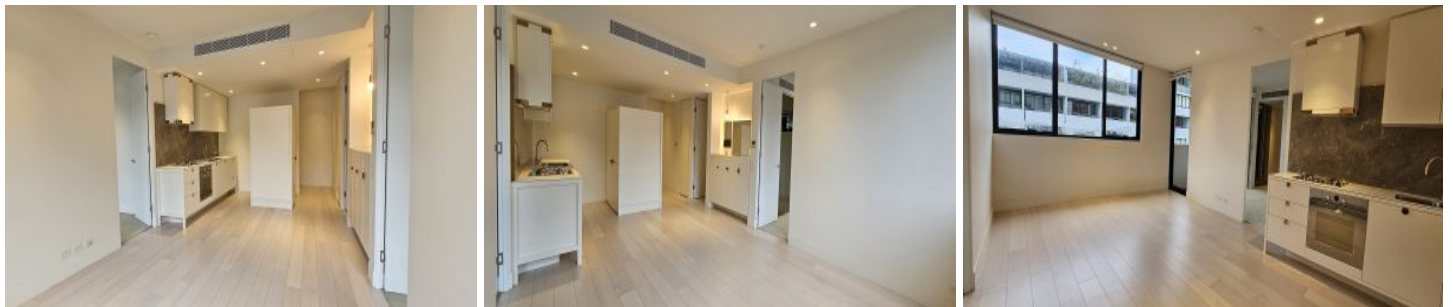


# VILLAGE PROPERTY



**F307/72 MacDonald Street Erskineville NSW**

2 2 1

Available 25th June

Beautifully crafted with an exacting attention to detail in both design and finish, this breathtaking garden level residence is the ultimate in modern comfort. Smart, stylish and easy to maintain, this is the ideal apartment for the professional couple or single seeking an affordable rental into one of Erskineville's finest.

Eve Apartments offers an unbeatable urban lifestyle just 10 minutes from the CBD. Only 250m from the train station and centrally located in Erskineville's famous café and restaurant precinct. Be entertained, be indulged and be nourished with the best in dining, shopping and entertainment close by. Woolworths Metro Park Sydney

[For full version visit the website](https://www.villageproperty.com.au)

**Type** : Apartment  
**Price** : \$990 Per Week  
**View** : <https://www.villageproperty.com.au/lease/nsw/inner-west/erskineville/residential/apartment/8022364>



**Alan Wang**  
1300 62 44 00

<https://www.villageproperty.com.au>

