

VILLAGE PROPERTY



7.05/2A Elsie Street Burwood NSW

2  2  1 

Available NOW

Designed by famous architects Turner, have created an alluring new landmark right in the beating heart of Burwood, on the doorstep of Burwood Park. Capturing glorious predominantly northerly views from the city skyline to the majestic Blue Mountains, this slender, elegant building is a spectacle of glass and light. Encompassing a maximum just five residences per floor, it has a boutique feel.

- Modern kitchen with Smeg appliances including gas stove, dishwasher, oven and rangehood
- Expansive balcony that draw in city/park views and light deep into apartments
- Communal rooftop garden on the north-eastern corner with city views

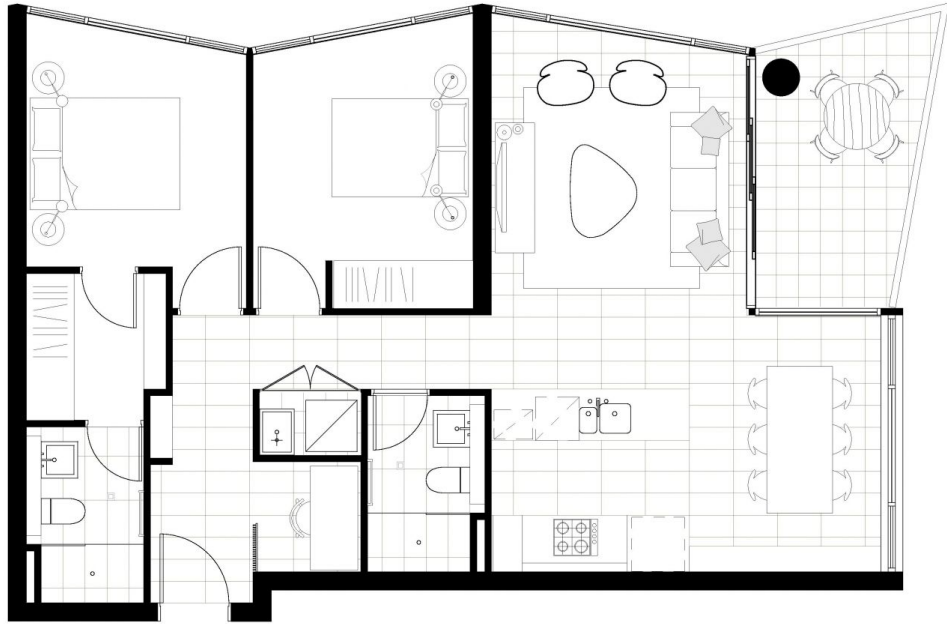
Price : \$1,100 Per Week

View : <https://www.villageproperty.com.au/lease/nsw/inner-west/burwood/residential/apartment/8023740>



Zhuoqun (Kate) Zhang
1300 62 44 00

<https://www.villageproperty.com.au>



LEVEL 4, 6, 8, 10, 12

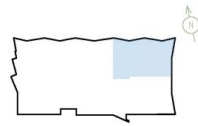
405, 605, 805,
1005, 1205

2 Bedrooms

Internal area (sqm): 79

Balcony area (sqm): 8

Total (sqm): 87



lighthouseburwood.com.au | 1800 137 889

ATLAS
PROPERTY HOLDINGS PTY LTD

CBRE

Disclaimer: 1. These sales data have been prepared solely for information. 2. The information is believed to be correct, but is not guaranteed. 3. Changes may be made during construction and alterations, areas, fittings, finishes and specifications are subject to change without notice in accordance with the operation of the contract for sale. 4. The fixtures and fittings depicted are not included with the sale and purchasers must refer to their contracts for sale for the list of inclusions. 5. The position of the fixtures and fittings should not be taken to be indicative of their position of power points, the connecting wires and the like. 6. Prospective purchasers must visit the site and inspect the property. 7. All goods including fixtures and fittings and the like are purchased and sold "as is" without warranty and are not eligible for the typical goods and services return policy.