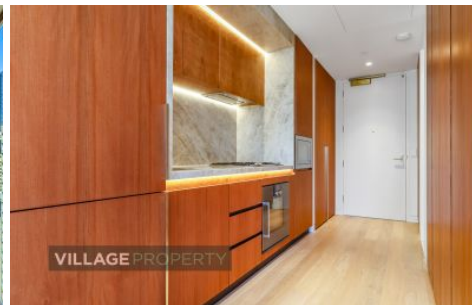


# VILLAGE PROPERTY



**1905/160 King Street Sydney NSW**

Available from 4th July -

Idyllically positioned on Hyde Park and amongst Sydneys most important historical buildings, King & Phillip offers a location that marries unparalleled city living with scenic parkland surrounds.

Designed to complement the architectural masterpieces that frame its location, these meticulously designed residences pay homage to classic architectural principles using a dynamic and contemporary approach. With nearby St James Church, Hyde Park Barracks Museum, The Supreme Court of New South Wales and sweeping views of Hyde Park to wake up to each day.

1 1

**Type** : Apartment

**Price** : \$800 Per Week

**View** : <https://www.villageproperty.com.au/lease/nsw/sydney-city/sydney/residential/apartment/8034235>



**Zhuoqun (kate) Zhang**  
1300 62 44 00

[For full version visit the website](https://www.villageproperty.com.au)

<https://www.villageproperty.com.au>



DISCLAIMER: This floor plan was produced prior to construction and is not drawn to scale. Changes may be made during construction and/or because of design development and therefore dimensions, areas, fittings and specifications are subject to change and final survey. This is consistent with the provisions of the contract for sale. The furniture and furnishings depicted are indicative and for decorative purposes and are not included with the apartment. The contract of sale details the inclusions to be provided with the apartment. The final position of power, data and TV points are yet to be determined. Bulkheads for services are not depicted.

## KING & PHILLIP RESIDENCES

### RESIDENCE - 1905

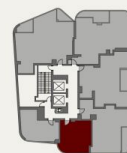
Studio

### RESIDENCE AREA

Floor	35 m <sup>2</sup>
Alfresco	-
Total	35 m <sup>2</sup>

### KEY

- |             |            |
|-------------|------------|
| 1. Entry    | 4. Living  |
| 2. Bathroom | 5. Bedroom |
| 3. Kitchen  | 6. Laundry |



galileo

fjmt

CBRE