

# VILLAGE PROPERTY



**705/27 Ashford Avenue Castle Hill NSW**

2  2  1 

Deposit Paid

Village Property is pleased to offer for lease these brand new two bedroom apartments that are sure to exceed your expectations.

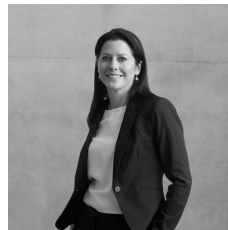
Castle Hill's premier new residential apartments. Perfectly located within a vibrant village precinct in The Hills District, just moments from Showground Metro station, The Ashford is the home you've been seeking, offering the lifestyle you deserve.

Features Include:

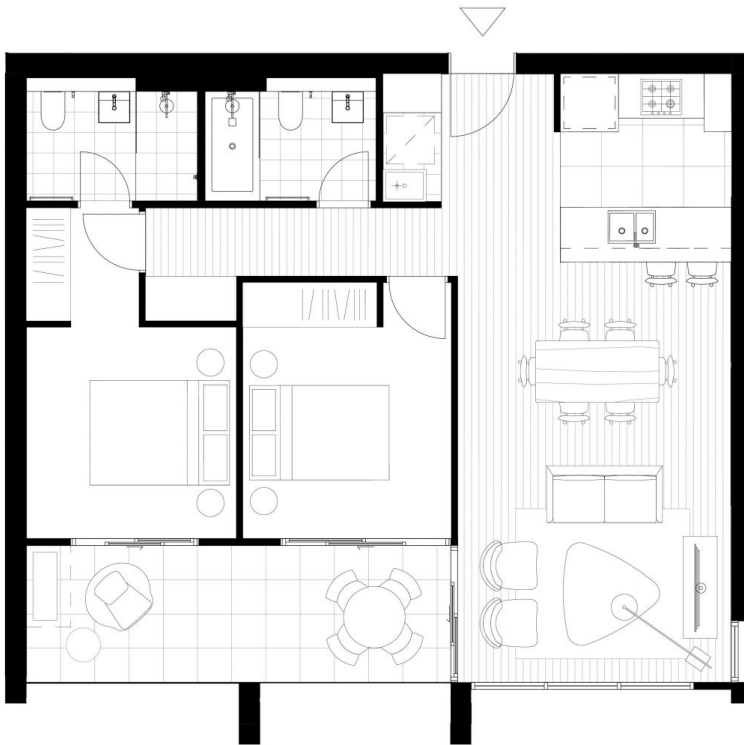
- Open plan kitchen with built-in oven, cooktop, dishwasher.
- Timber flooring throughout living area.
- Spacious bedrooms with built-in wardrobes.
- Ducted air conditioning.

**Price** : Deposit Paid

**View** : <https://www.villageproperty.com.au/lease/nsw/hills/castle-hill/residential/apartment/8037635>



**Melanie Brown**  
**1300 62 44 00**



**THE ASHFORD**  
CASTLE HILL

**Apartment 506, 605, 705**

 2 BEDROOMS	 2 BATHROOM	 0 STUDY/FLEXI
--	--	---

Total	89m <sup>2</sup>
INTERNAL	78m <sup>2</sup>
EXTERNAL	11m <sup>2</sup>



25 Ashford Avenue  
Castle Hill  
1300 290 212  
[theashfordcastlehill.com.au](http://theashfordcastlehill.com.au)



Updated 29 November 2021 - Note: this plan is a guide only and does not constitute an offer or contract. Please note that changes may be made to the development during construction and elements such as walls, fittings, fixtures etc. may change without notice. All parties should rely on their own investigation to verify the information as it is not guaranteed. No liability will be accepted for any inaccuracy or misstatement.