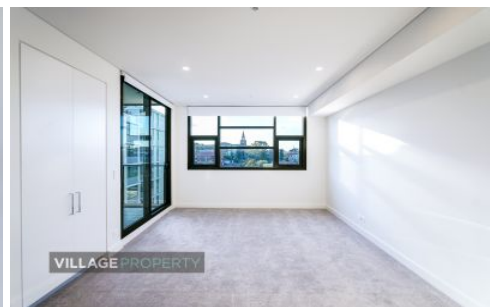
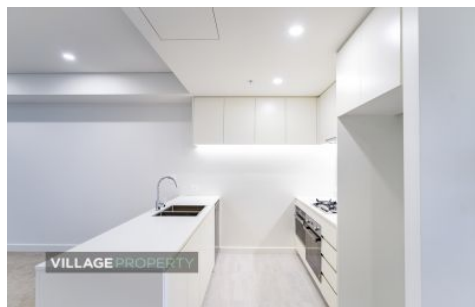


# VILLAGE PROPERTY



159/213 Princes Highway Arncliffe NSW

2 2 1

Available NOW

\*Building D Entrance\*

Presented on a high level with panoramic Botany Bay Water views for those seeking the ultimate luxury lifestyle and convenience. Unmatched in refinement and superbly located this beautiful apartment is a unique opportunity to experience quintessential living in an urban lifestyle. This stunning modern development also features a community centre with basketball courts and exercise areas as well as plenty of retail options making this the ideal locale for those who like to enjoy new and refined living in comfort and convenience. Minutes walk away to Arncliffe Train Station and 15 minutes train ride to the CBD. Only 4 minutes drive

**Type** : Apartment

**Price** : \$750 per week

**View** : <https://www.villageproperty.com.au/lease/nsw/st-george/arncliffe/residential/apartment/8039693>



**Alan Wang**  
1300 62 44 00

[For full version visit the website](https://www.villageproperty.com.au)

<https://www.villageproperty.com.au>