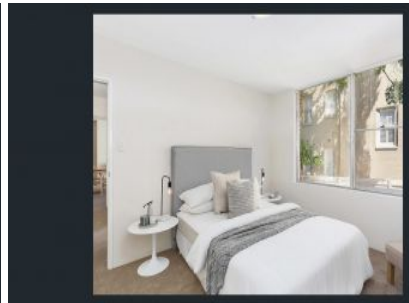
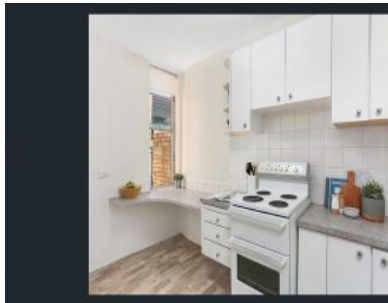
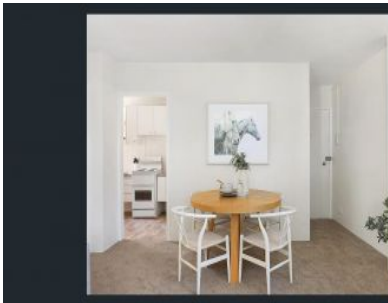


VILLAGE PROPERTY



2/36 Wycombe Road Neutral Bay NSW

2 1 1

Available July 8th

Two bedroom apartment with carpark, in great location near Ferry and a short walk to Neutral Bay shops, restaurants and Bus transport.

- Kitchen has oven and electric stove top
- Spacious lounge room with big windows
- Nice green view
- Two spacious bedrooms, with built in wardrobes
- Security building, intercom, lift
- Undercover car space included
- Pets considered upon application

Ideally located close to public transport including bus and ferry transport, local parks and Sydney Harbour front walks.

Price : \$650 Per Week

View : <https://www.villageproperty.com.au/lease/nsw/north-shore-lower/neutral-bay/residential/apartment/8039899>



Taneisha Kerr
1300 62 44 00

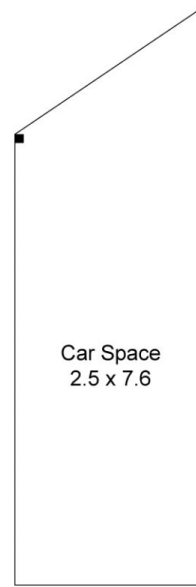
Unit 2, 36 Wycombe Road, Neutral Bay



2 Bed 1 Bath 1 Car

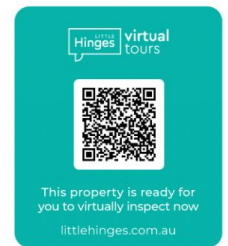


FLOOR PLAN



(Not In Position)

CAR SPACE



VILLAGE PROPERTY

All information contained herein is gathered by Little Hinges. Whilst the scanning technology is highly reliable, we cannot guarantee its accuracy and interested parties should rely on their own enquiries.