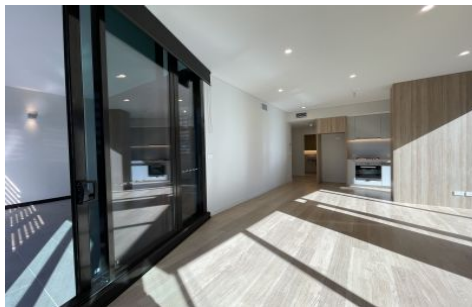
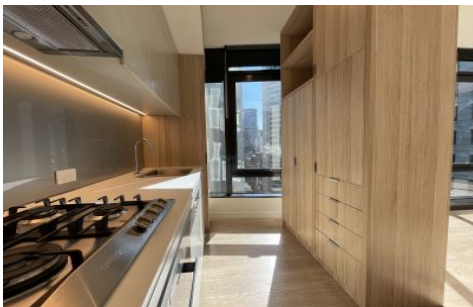


VILLAGE PROPERTY



1107/38 York Street Sydney NSW

2  2 

Available from 10th July-

York & George is an innovative architectural design interwoven with stunning panoramic views over Sydney's CBD with expansive floor to ceiling windows. Perfectly positioned to take advantage of all amenities and services Sydney has to offer, providing comfort and convenience for the modern urban lifestyle. Light rail transport just footsteps away at your convenience for ease of travel. Only 6 minutes walk to Woolworths Town hall and Town Hall Station. Retail shopping with abundance of restaurants and cafes just within walking distance.

Lease periods are 6-12 months.

Type : Apartment

Price : \$1,350 Per Week

View : <https://www.villageproperty.com.au/lease/nsw/sydney-city/sydney/residential/apartment/8040060>



Zhuoqun (Kate) Zhang
1300 62 44 00

[For full version visit the website](https://www.villageproperty.com.au)

<https://www.villageproperty.com.au>