

VILLAGE PROPERTY



301/35 Flora Street Kirrawee NSW

2  **2**  **1** 

HOLDING DEPOSIT TAKEN

Unmatched in refinement, South Village apartments are some of the most exquisite residences on offer. Superbly located, these beautiful apartments are a unique opportunity to experience quintessential living in an urban lifestyle.

Take advantage of this limited opportunity to live in a highly desirable location.

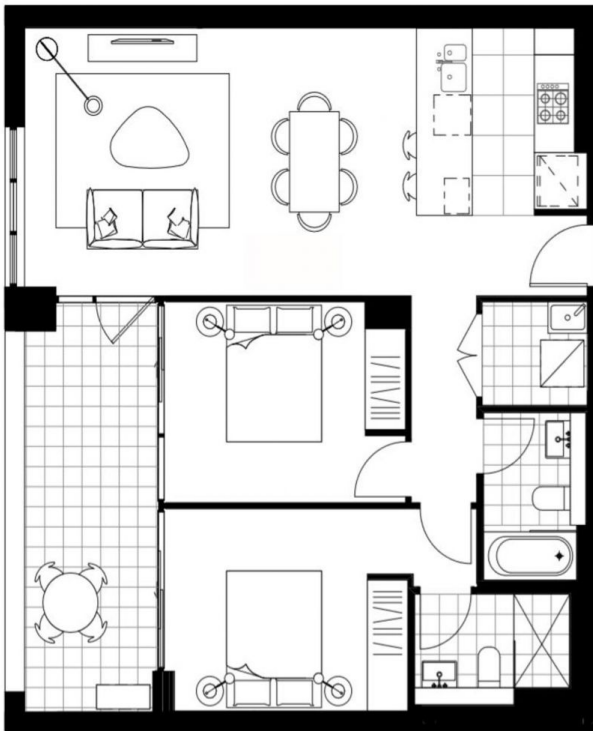
Pre-apply to secure this apartment by making an application via: <http://bit.ly/villageproperty>
View bottom of ad for how to apply.

Lease periods are 6-12 months. Pets to be considered at landlord's discretion.

Price : HOLDING DEPOSIT TAKEN

View : <https://www.villageproperty.com.au/lease/nsw/sutherland/kirrawee/residential/apartment/8042959>

<https://www.villageproperty.com.au>



South Village *kinnavee*

Building E Key Plan



Level 2-12

E2.01, E3.01, E4.01, E5.01, E6.01, E7.01,
E8.01, E9.01, E10.01, E11.01, E12.01

2 BED 2 BATH

TOTAL 89 sqm

INTERNAL AREA 76 sqm

BALCONY AREA 13 sqm

Note: this plan is a guide only and does not constitute an offer or contract. Please note that changes may be made to the development during construction and elements such as areas, fittings, fixtures etc may change without notice. All parties should rely on their own investigation to validate this information as it is not guaranteed. No liability will be accepted for any inaccuracy or misstatement.