

# VILLAGE PROPERTY



**506/22 Cambridge Street Epping NSW**

1 1 1

This contemporary, sunlit apartment boasts high-quality finishes, perfect for first home buyers or the savvy investor. Conveniently situated just 450 meters from Epping train station, shops, and dining options, it falls within the catchment areas of the highly esteemed Epping Boys, Cheltenham Girls, and Carlingford High Schools.

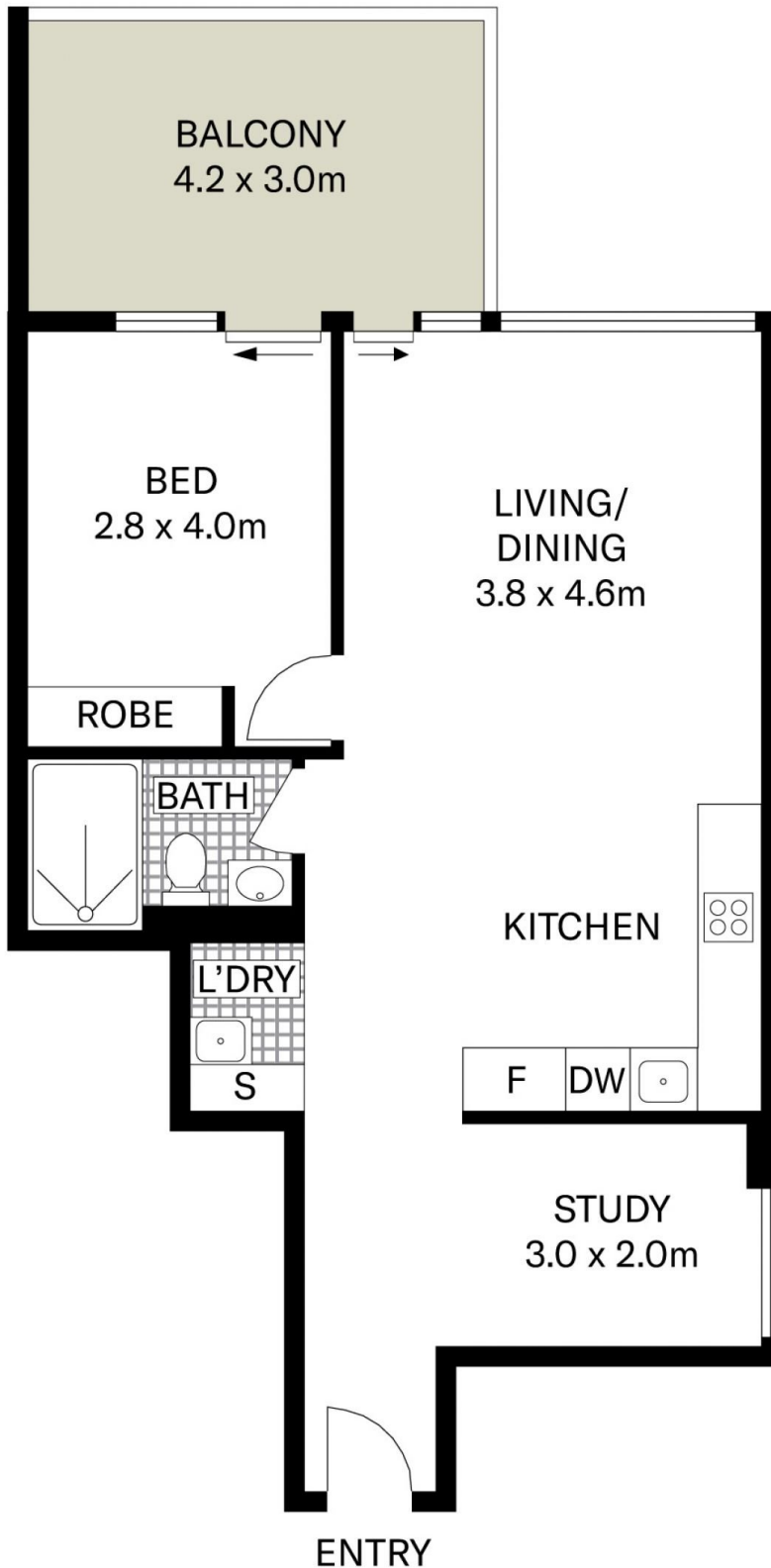
- Modern kitchen equipped with stone countertops, gas cooking, and a dishwasher
- Spacious separate study area or flexible guest room
- Main bedroom includes built-in wardrobes and balcony access
- Open-plan living and dining area featuring state-of-the-art kitchen appliances
- West-facing balcony with expansive sky views
- Sleek bathroom, internal laundry, and air conditioning
- Located on the 6th floor with a dedicated car space and

**Price** : \$600,000 - \$650,000  
**Building Size** : 66 sqm  
**View** : <https://www.villageproperty.com.au/sale/nsw/northern-suburbs/epping/residential/apartment/8045349>

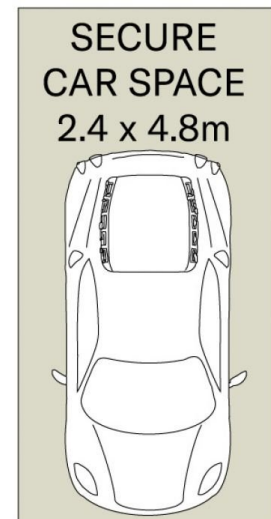


**Thomas (Tom) Jones**  
**1300 62 44 00**

<https://www.villageproperty.com.au>



(NOT IN POSITION)



(NOT IN POSITION)

All information contained herein is gathered from sources we believe to be reliable.  
We cannot however guarantee its accuracy and parties should and rely on their own requirements.



506/22 Cambridge Street, Epping

**VILLAGE**  
PROPERTY