

# VILLAGE PROPERTY



**1206/1 Marshall Avenue St Leonards NSW**

1 1 1

Available August 2nd

Embassy Tower, just meters from St Leonards station offers the ultimate lifestyle of comfort and convenience. Boasting high end designer finishes including floor to ceiling windows, Miele appliances, elegant bathrooms and kitchens. This is the pinnacle of luxurious living.

- Good sized balcony ideal for entertaining
- Well appointed bedroom with built-ins
- Ample storage options
- Basement security parking
- Just meters to St Leonards Station
- Moments walk to Crows Nests bustling bars and restaurants

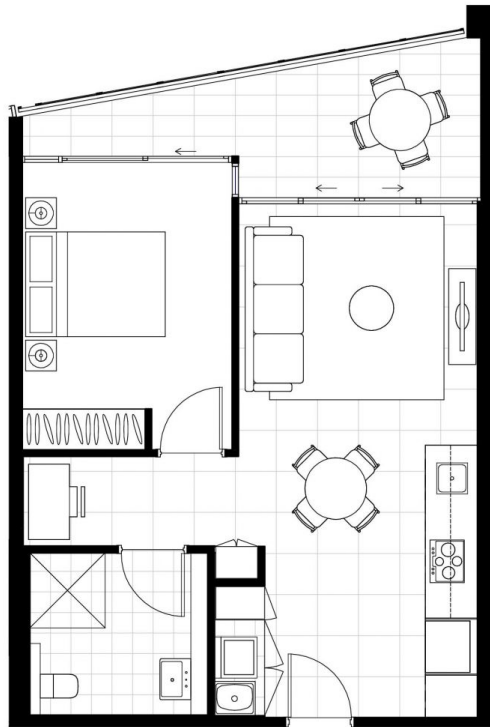
[For full version visit the website](https://www.villageproperty.com.au)

**Type** : Apartment  
**Price** : \$770 Per Week  
**View** : <https://www.villageproperty.com.au/lease/nsw/north-shore-lower/st-leonards/residential/apartment/8067027>



**Taneisha Kerr**  
**1300 62 44 00**

<https://www.villageproperty.com.au>



Disclaimer: Please note that the layout plan was produced prior to construction. The information is believed to be correct but is not guaranteed. Changes may be made during construction and dimensions, areas, fixings, finishes and specification are subject to change without notice in accordance with the provisions of the contract for sale. The furniture and furnishings depicted are not included with any sale and purchasers must refer to their contract for sale for the list of inclusions. The position of the furniture and furnishings should not be taken to be indicative of final positions of power points, tv connection points and the like. Prospective purchasers must rely on their own enquiries. All graphics including tile layout and balustrades and the like are indicative only. Bulkheads for services are not depicted. The layout plan is at an unspecified scale.

Rev 1



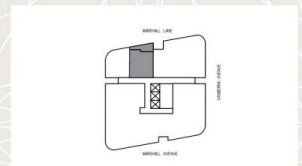
# EMBASSY TOWER

## APARTMENTS

**1007, 1107, 1206, 1306,  
1506, 1606, 1706**

**1 BEDROOM + MEDIA**

INTERNAL	51 m <sup>2</sup>
EXTERNAL	10 m <sup>2</sup>
<b>TOTAL</b>	<b>61 m<sup>2</sup></b>



LEVELS 10-17

[www.embassytower.com.au](http://www.embassytower.com.au)  
**1800 775 911**

**LOFTEX CBRE**