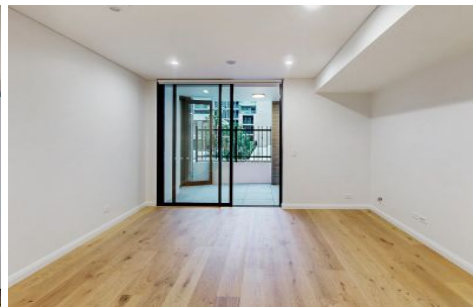


VILLAGE PROPERTY



118/29 Ashford Avenue Castle Hill NSW

2  **2**  **1** 

Available Now

Village Property is pleased to offer for lease this brand new two bedroom apartments that are sure to exceed your expectations.

Castle Hill's premier new residential apartments. Perfectly located within a vibrant village precinct in The Hills District, just moments from Showground Metro station, The Ashford is the home you've been seeking, offering the lifestyle you deserve.

Features Include:

- Open plan kitchen with built-in oven, cooktop, dishwasher and large fridge space.

[For full version visit the website](https://www.villageproperty.com.au/lease/nsw/hills/castle-hill/residential/apartment/8070236)

Type : Apartment

Price : Deposit Taken

View : <https://www.villageproperty.com.au/lease/nsw/hills/castle-hill/residential/apartment/8070236>

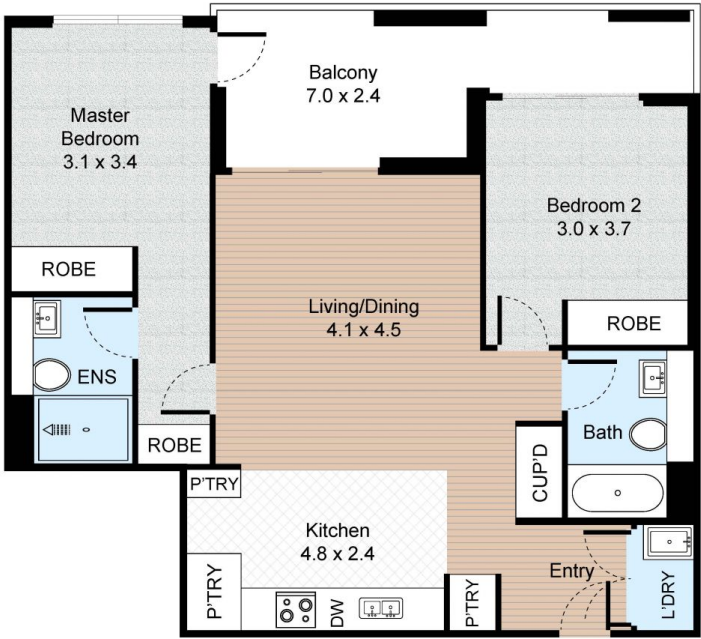


Melanie Brown
1300 62 44 00

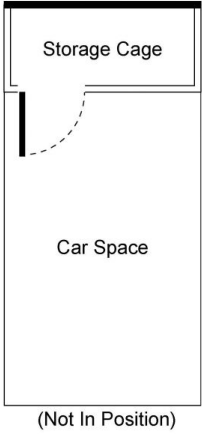
<https://www.villageproperty.com.au>

Unit 118, 29 Ashford Avenue, Castle Hill, New South Wales

2 Bed 2 Bath 1 Car



FLOOR PLAN



CAR SPACE/ STORAGE CAGE

VILLAGE PROPERTY

All information contained herein is gathered by Little Hinges. Whilst the scanning technology is highly reliable, we cannot guarantee its accuracy and interested parties should rely on their own enquiries.

