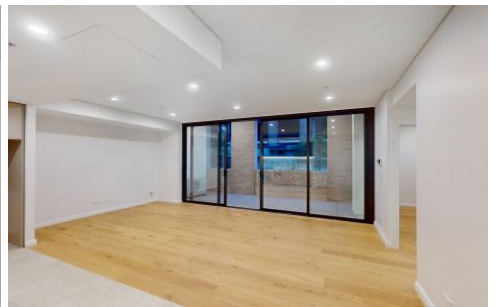
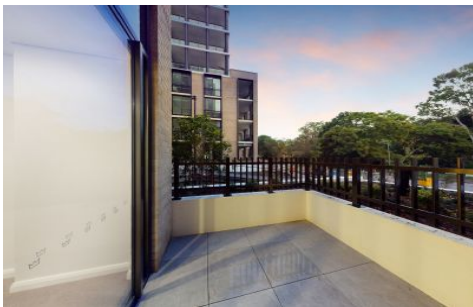


VILLAGE PROPERTY



G03/27 Ashford Avenue Castle Hill NSW

1 1 1

Available Now

Village Property is pleased to offer for lease this brand new one bedroom plus study apartment that are sure to exceed your expectations.

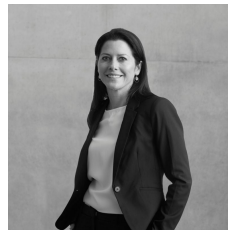
Castle Hill's premier new residential apartments. Perfectly located within a vibrant village precinct in The Hills District, just moments from Showground Metro station, The Ashford is the home you've been seeking, offering the lifestyle you deserve.

Features Include:

- Open plan kitchen with built-in oven, cooktop, dishwasher and large fridge space.
- Spacious living room
- Timber flooring throughout living area.

Price : \$660 Per Week

View : <https://www.villageproperty.com.au/lease/nsw/hills/castle-hill/residential/apartment/8070753>

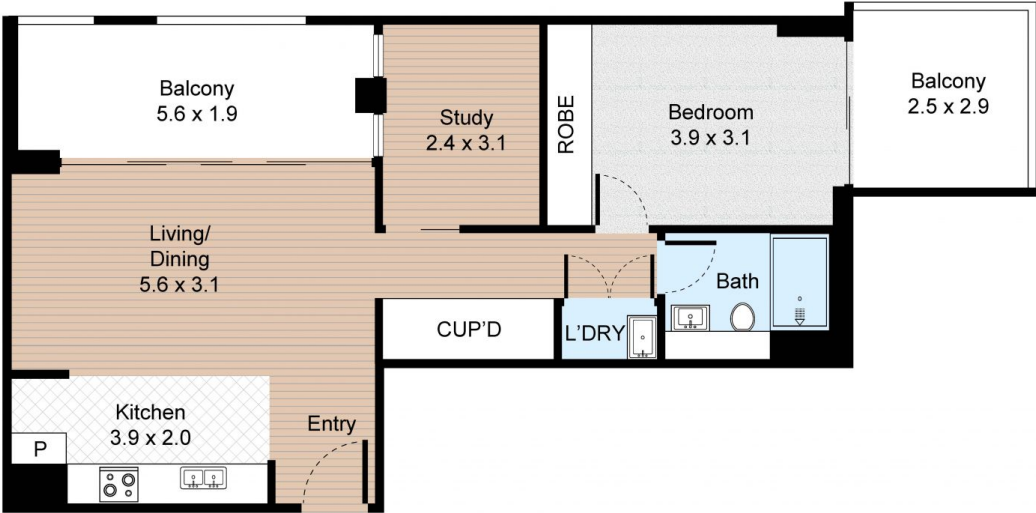


Melanie Brown
1300 62 44 00

<https://www.villageproperty.com.au>

G03/27 Ashford Avenue, Castle Hill, NSW

1 Bed 1 Bath



FLOOR PLAN

VILLAGEPROPERTY

All information contained herein is gathered by Little Hinges. Whilst the scanning technology is highly reliable, we cannot guarantee its accuracy and interested parties should rely on their own enquiries.