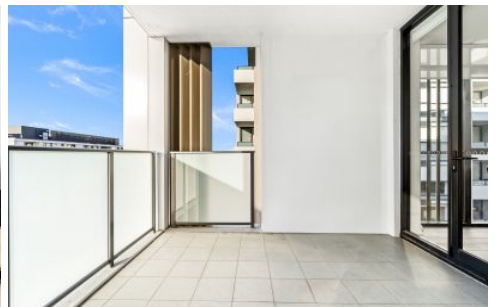


VILLAGE PROPERTY



517/6 Village Place Street Kirrawee NSW

2 2 1

Unmatched in refinement, This South Village apartment is one of the most exquisite residences on offer. Superbly located, this beautiful apartment is a unique opportunity to experience quintessential living in an urban lifestyle.

Features include:

- Well-proportioned north facing open plan floorplan
- Two large bedrooms with built in robes
- Separate study area.
- Entertainers balcony with views to the city and botany bay

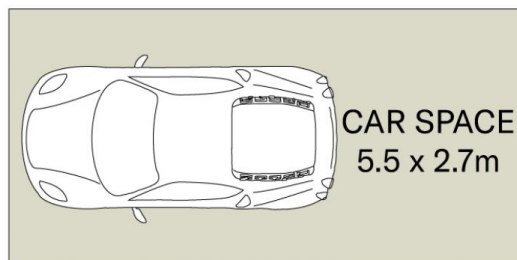
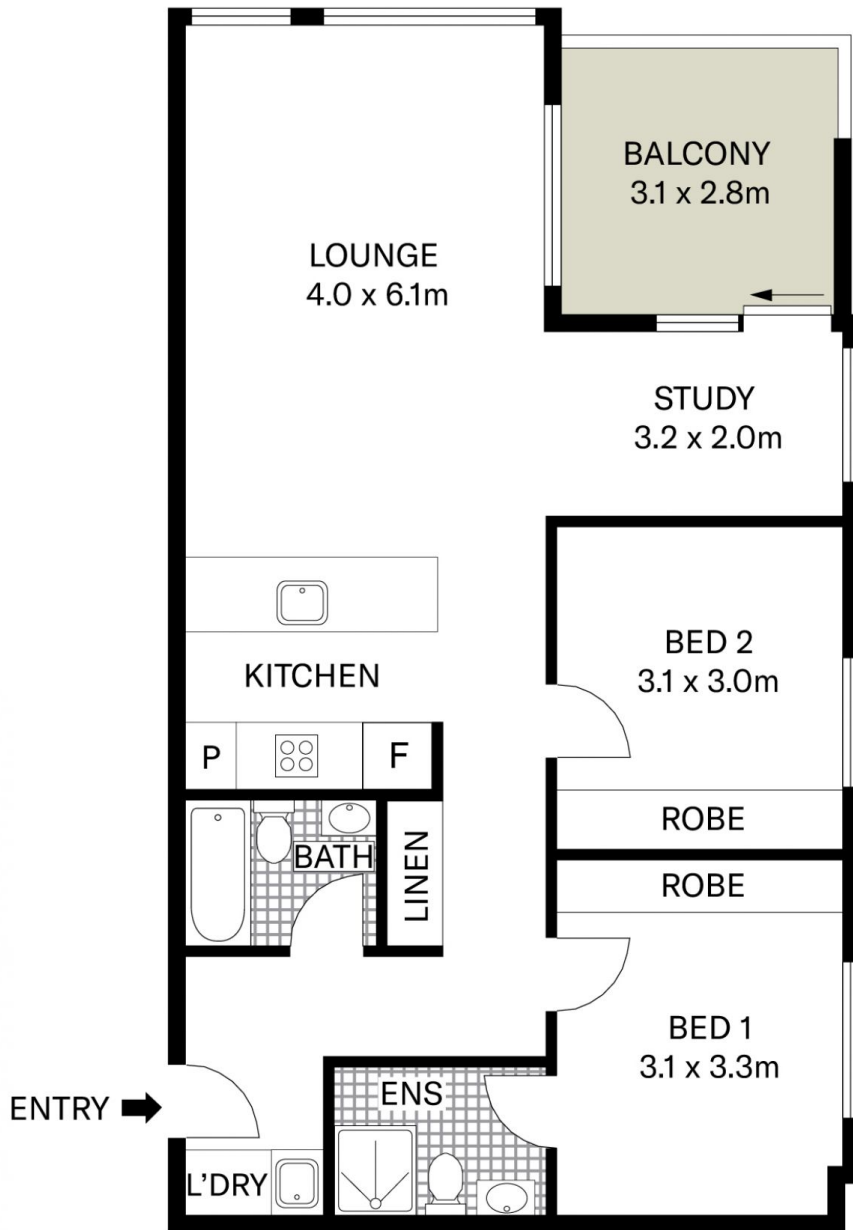
[For full version visit the website](https://www.villageproperty.com.au)

Type : Apartment
Price : Under Contract
Land Size : 111 sqm
View : <https://www.villageproperty.com.au/sale/nsw/sutherland/kirrawee/residential/apartment/8071996>



Tyler Taylor
1300 62 44 00

<https://www.villageproperty.com.au>



STORAGE

(NOT IN POSITION)

All information contained herein is gathered from sources we believe to be reliable.
We cannot however guarantee its accuracy and parties should and rely on their own requirements.



517/6 Village Place, Kirrawee

VILLAGE
PROPERTY