

VILLAGE PROPERTY



148/213 Princes Highway Arncliffe NSW

1 1 1

Unmatched in refinement, this near new Bloom apartment is one of the most exquisite residences.

Superbly located, this beautiful apartment is a unique opportunity to experience quintessential living in an urban lifestyle.

Features include:

- * Well-proportioned open plan living
- * Large Bedroom with built in wardrobe
- * Chic kitchen layout with top of the range Delonghi appliances

[For full version visit the website](https://www.villageproperty.com.au)

Type : Apartment
Price : UNDER CONTRACT
Land Size : 72 sqm
View : <https://www.villageproperty.com.au/sale/nsw/st-george/arncliffe/residential/apartment/8091053>

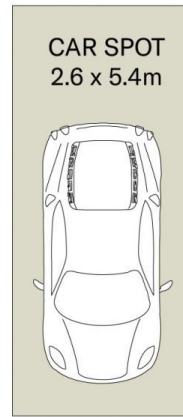
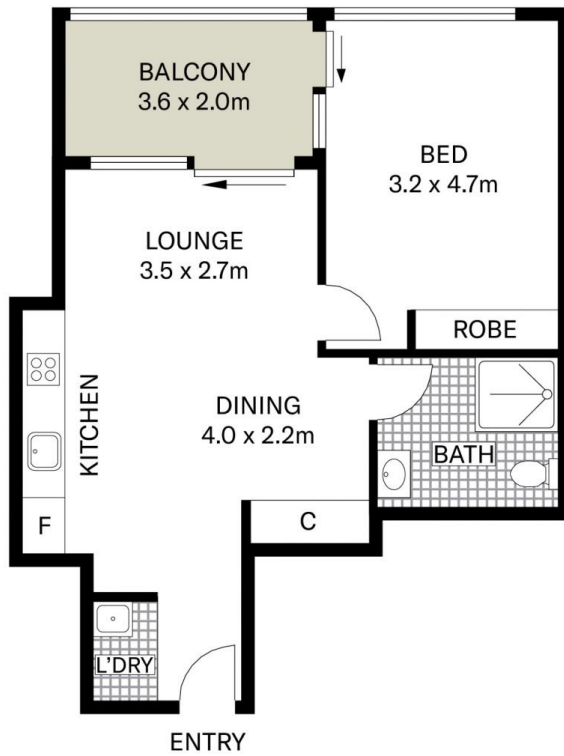


Tyler Taylor
1300 62 44 00



Jack Williams
1300 62 44 00

<https://www.villageproperty.com.au>



(NOT IN POSITION)



(NOT IN POSITION)

All information contained herein is gathered from sources we believe to be reliable. We cannot however guarantee its accuracy and parties should and rely on their own requirements.



148/213 Princes Highway, Arncliffe

VILLAGE
PROPERTY