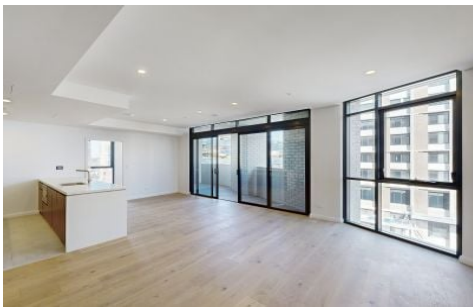


# VILLAGE PROPERTY



432/2C Conferta Avenue Tallawong NSW

2  2  1 

"TALLAWONG VILLAGE"

Live the life you always imagined at "Tallawong Village", a beautifully curated brand new and great value 2 bedroom apartment with parking.

Only a 2-minute walk to the new Tallawong Metro Station, with trains every 4 minutes, Tallawong Village is poised to take you wherever you need to go but gives you a thousand reasons to stay.

- Brand new 2 bedroom, 2 bathroom home with parking.
- Beautifully crafted interiors featuring luxurious finishes
- Functional and beautifully designed kitchens and fittings
- Stunning facilities include podium communal open spaces, BBQ areas and a publicly accessible park.
- Located right opposite of the new Tallawong Metro

**Price** : DEPOSIT TAKEN

**View** : <https://www.villageproperty.com.au/lease/nsw/western-sydney/tallawong/residential/apartment/8094245>

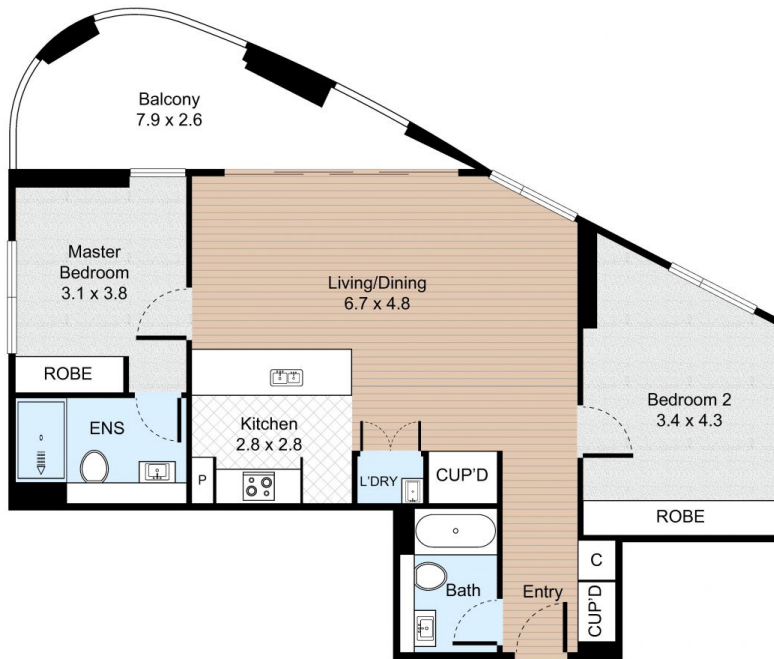


**Tyler Taylor**  
1300 62 44 00

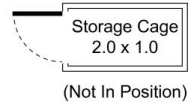
<https://www.villageproperty.com.au>

# Unit C432, 2-12 Conferta Avenue, Tallawong, New South Wales

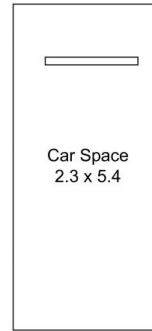
2 Bed 2 Bath 1 Car



FLOOR PLAN

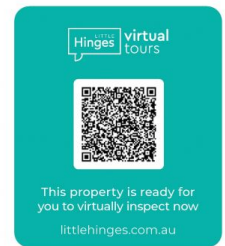


STORAGE CAGE



CAR SPACE

Internal : 81m<sup>2</sup>  
External : 29m<sup>2</sup>



All information contained herein is gathered by Little Hinges. Whilst the scanning technology is highly reliable, we cannot guarantee its accuracy and interested parties should rely on their own enquiries.