

# VILLAGE PROPERTY



**172/213 Princes Highway Arncliffe NSW**

2 2 1

Unmatched in refinement, this near new Bloom apartment is one of the most exquisite residences. Superbly located, this beautiful apartment is a unique opportunity to experience quintessential living in an urban lifestyle.

Take advantage of this limited opportunity to live in a highly desirable location.

Features include:

- Low Strata rates, \$829.60 per quarter
- Well-proportioned open plan design
- Large Bedrooms with built in robes, main with ensuite
- Chic kitchen layout with top of the range Delonghi appliances

[For full version visit the website](https://www.villageproperty.com.au)

**Type** : Apartment  
**Price** : UNDER CONTRACT  
**Land Size** : 116 sqm  
**View** : <https://www.villageproperty.com.au/sale/nsw/st-george/arncliffe/residential/apartment/8099421>

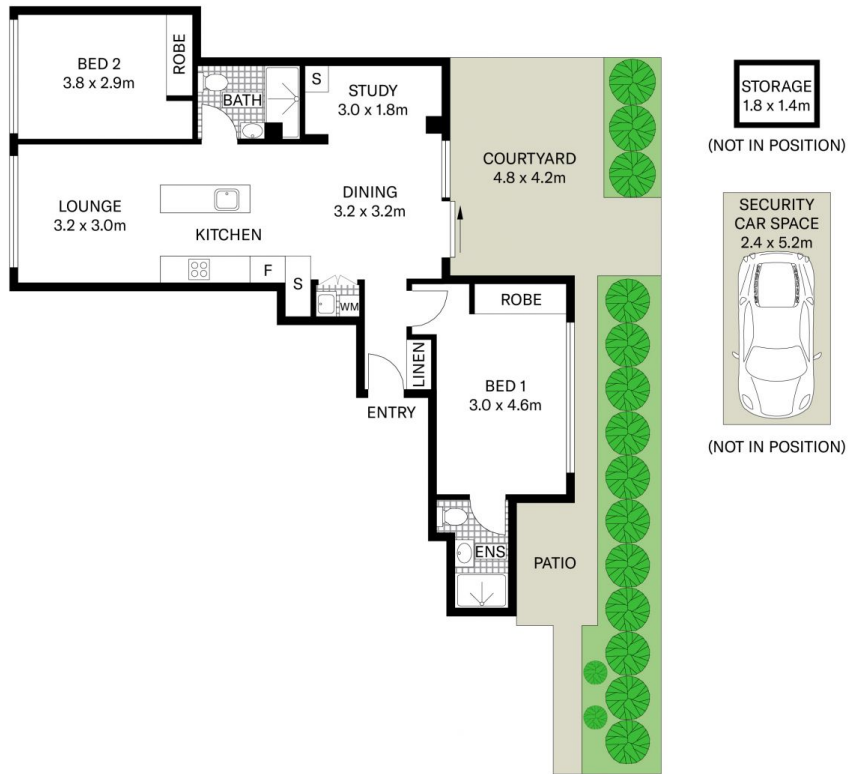


**Tyler Taylor**  
1300 62 44 00



**Jack Williams**  
1300 62 44 00

<https://www.villageproperty.com.au>



All information contained herein is gathered from sources we believe to be reliable.  
We cannot however guarantee its accuracy and parties should and rely on their own requirements.



172/213 Princes Highway, Arncliffe

**VILLAGE**  
PROPERTY