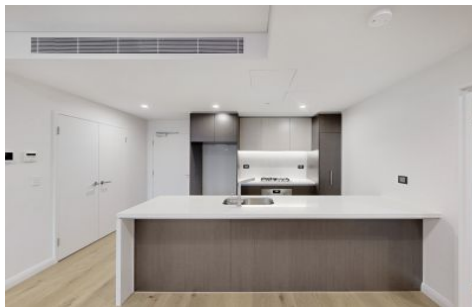
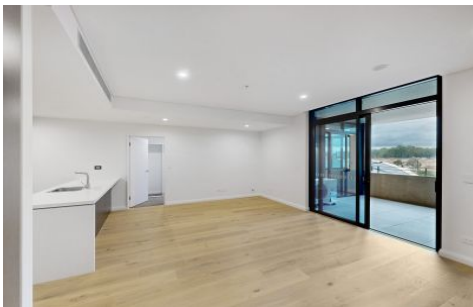


VILLAGE PROPERTY



328/1E Themeda Avenue Tallawong NSW

2  2  1 

"TALLAWONG VILLAGE"

Live the life you always imagined at "Tallawong Village", a beautifully curated brand new and great value 2 bedroom apartment with parking.

Only a 2-minute walk to the new Tallawong Metro Station, with trains every 4 minutes, Tallawong Village is poised to take you wherever you need to go but gives you a thousand reasons to stay.

- Brand new 2 bedroom, 2 bathroom home with parking.
- Situated on Level 3 with area views
- Separate Study Room
- Beautifully crafted interiors featuring luxurious finishes

[For full version visit the website](https://www.villageproperty.com.au)

Type : Apartment
Price : DEPOSIT TAKEN
View : <https://www.villageproperty.com.au/lease/nsw/western-sydney/tallawong/residential/apartment/8100942>



Tyler Taylor
1300 62 44 00

<https://www.villageproperty.com.au>

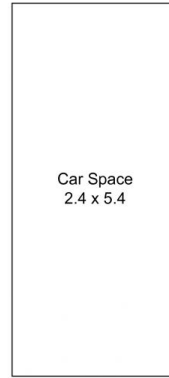
Unit F328, 1 Themeda Avenue, Tallawong, New South Wales



2 Bed 2 Bath 1 Car



FLOOR PLAN



Car Space
2.4 x 5.4
(Not In Position)

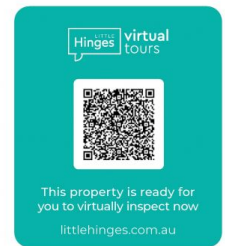
CAR SPACE



Storage Cage
1.0 x 2.0
(Not In Position)

STORAGE CAGE

Internal : 78m²
External : 25m²



VILLAGE PROPERTY

All information contained herein is gathered by Little Hinges. Whilst the scanning technology is highly reliable, we cannot guarantee its accuracy and interested parties should rely on their own enquiries.