

# VILLAGE PROPERTY



**301/1D Themeda Avenue Tallawong NSW**

**2**  **2**  **1** 

**"TALLAWONG VILLAGE"**

Only a 2-minute walk to the new Tallawong Metro Station, with trains every 4 minutes, Tallawong Village is poised to take you wherever you need to go but gives you a thousand reasons to stay.

- Brand new 2 bedroom, 2 bathroom home with parking.
- Beautifully crafted interiors featuring luxurious finishes
- Functional and beautifully designed kitchens and fittings
- Stunning facilities include podium communal open spaces, BBQ areas and a publicly accessible park.
- Located right opposite of the new Tallawong Metro Station with trains every 4 mins.
- Restaurants, cafes and grocers right at your doorstep

[For full version visit the website](https://www.villageproperty.com.au)

**Type** : Apartment

**Price** : DEPOSIT TAKEN

**View** : <https://www.villageproperty.com.au/lease/nsw/western-sydney/tallawong/residential/apartment/8106562>

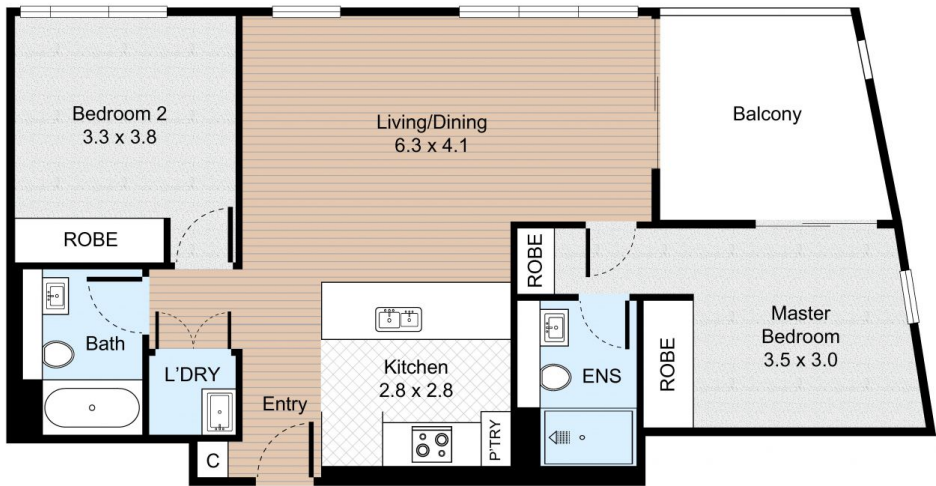


**Tyler Taylor**  
**1300 62 44 00**

<https://www.villageproperty.com.au>

Unit 301, 1D Themeda Avenue, Tallawong, New South Wales

2 Bed 2 Bath



Internal : 74m<sup>2</sup>



FLOOR PLAN

VILLAGEPROPERTY

All information contained herein is gathered by Little Hinges.  
Whilst the scanning technology is highly reliable,  
we cannot guarantee its accuracy and interested parties  
should rely on their own enquiries.