

# VILLAGE PROPERTY



1217/6 Grove Street Dulwich Hill NSW

1 1 1

Available NOW -

Fantastically located in the 'Arlington Grove' complex with gym facility. One minute walk to Arlington Light Rail stop - be in Sydney's CBD in 30 minutes, moments to Johnson Park and Arlington Recreation Reserve and close to vibrant village hubs of Dulwich Hill and Marrickville. You are just a Moments stroll to Johnson Park and Arlington Recreation Reserve and the iconic Sideways Deli Cafe. Located in the inner city hubs of Dulwich Hill and Marrickville, Arlington Grove is at the heart of a new approach to urban style.

Take advantage of this limited opportunity to live in a highly desirable location.

Lease periods are 6-12 months. Pets at landlord's discretion.

**Price** : \$650 Per Week

**View** : <https://www.villageproperty.com.au/lease/nsw/inner-west/dulwich-hill/residential/apartment/8107395>



**Alan Wang**  
1300 62 44 00

<https://www.villageproperty.com.au>

**Arlington**  
Grove Dulwich Hill

## KONA apartments

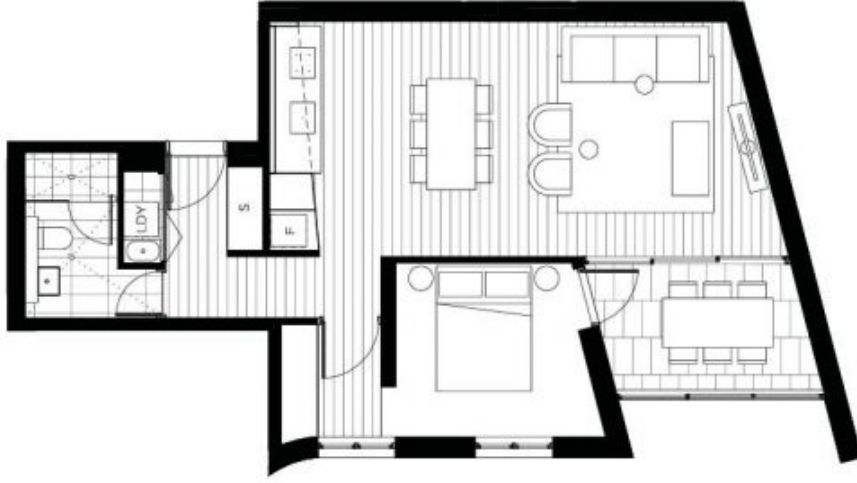
### ONE BEDROOM APARTMENT

1217

INTERNAL AREA: 55m<sup>2</sup>  
EXTERNAL AREA: 7m<sup>2</sup>  
TOTAL: 62m<sup>2</sup>

ARLINGTONGROVE.COM.AU  
1800 881 221

galileo **CBRE**



All areas shown are draft and subject to survey. All apartments subject to contract and availability. Images showing the building, interiors and views are computer generated prior to construction and indicative only. Dimensions, layout, finishes and specifications are subject to change and may differ from those shown. Views differ between apartments. Ground floor retail not yet confirmed. Furniture and plantings are for descriptive purposes and are not included.  
0/05/2015