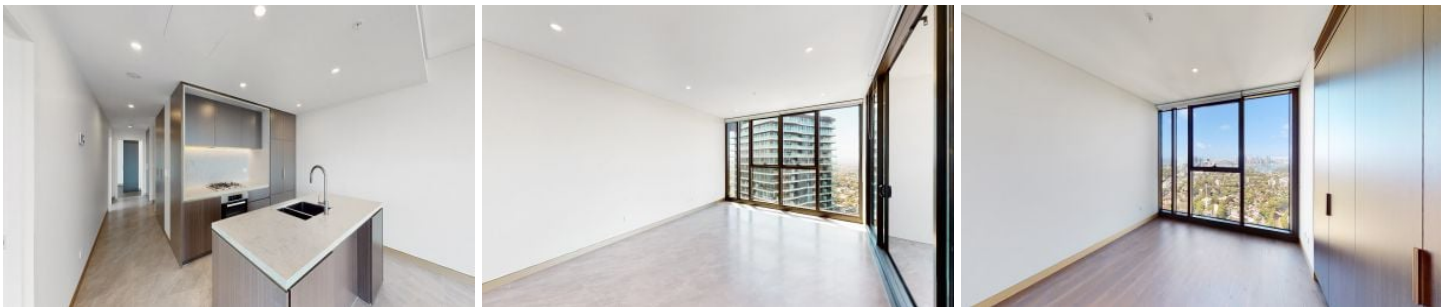


VILLAGE PROPERTY



4208/88 Christie Street St Leonards NSW

3 **2** **2**

Available Now

Eighty Eight is the near new building at popular St. Leonard's. Very convenient location with direct access to the train station, buses at your doorstep and only 5 mins to the new Metro Station. Gorgeous new apartments above, and below is an exciting new retail and dining precinct. Eighty Eight is set to transform St. Leonard's into the new Chatswood with specialty dining, cafes and major supermarket Coles.

- Stunning 180 Harbour Views
- Spacious open plan living opens on to the large balcony.
- Floor to ceiling windows with stunning natural light
- Extra study room with a sliding door

[For full version visit the website](https://www.villageproperty.com.au)

| | |
|----------------------|---|
| Type | : Apartment |
| Price | : \$1,800 Per Week |
| Building Size | : 101 sqm |
| View | : https://www.villageproperty.com.au/lease/nsw/north-shore-lower/st-leonards/residential/apartment/8110082 |



Taneisha Kerr
1300 62 44 00

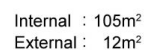
<https://www.villageproperty.com.au>

1

3 Bed



2 Bath



FLOOR PLAN

VILLAGE PROPERTY

All information contained herein is gathered from our 3D scanned tours via Matterport. Whilst the 3D scanning technology is very accurate we cannot guarantee its accuracy and interested parties should rely on their own enquiries.