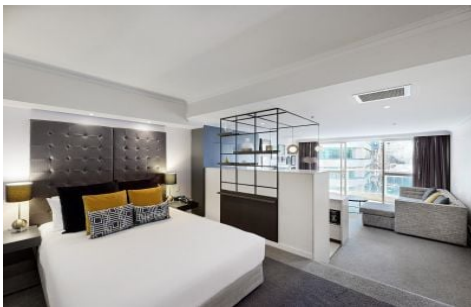


VILLAGE PROPERTY



610/2 Bond Street Sydney NSW

1 1

Renowned as Mantra's premier hotel in Sydney, this building is highly regarded as the top choice for interstate and overseas visitors seeking a convenient base in the heart of the Sydney CBD. Whether you choose to continue benefiting from a Mantra-managed hotel investment or make it your permanent residence, this property offers the ideal solution for those needing a CBD home with easy access to nearby offices and city hotspots.

Presenting a fantastic opportunity to secure a set and forget investment with incredible returns located in the heart of City CBD, perfect for a long term investment or self managed super fund (SMSF) acquisition.

This fully furnished serviced executive studio apartment is

[For full version visit the website](https://www.villageproperty.com.au/sale/nsw/sydney-city/sydney/residential/apartment/8118565)

Type : Apartment
Price : \$675,000 - \$725,000
View : <https://www.villageproperty.com.au/sale/nsw/sydney-city/sydney/residential/apartment/8118565>

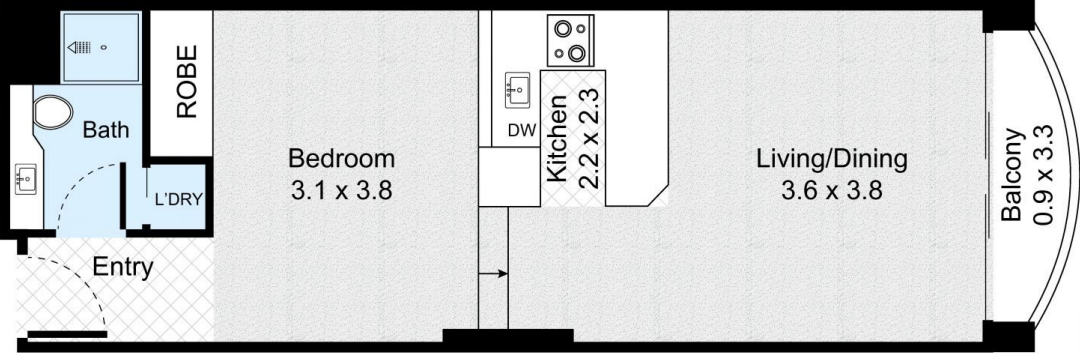


Thomas (Tom) Jones
1300 62 44 00

<https://www.villageproperty.com.au>

Unit 610, 2 Bond Street, Sydney

1 Bed 1 Bath



Internal : 42m²
External : 2m²



FLOOR PLAN

VILLAGEPROPERTY

All information contained herein is gathered by Little Hinges.
Whilst the scanning technology is highly reliable,
we cannot guarantee its accuracy and interested parties
should rely on their own enquiries.